



# **Influence of Different Level of NPK and Rhizobium on Physico Chemical Properties of Soil, Growth and Yield Attribute of Blackgram (*Vigna mungo* L.) Var: Shekhar-2**

**Pratibha Gavel<sup>a++</sup>, Narendra Swaroop<sup>a#</sup>, Tarence Thomas<sup>a†</sup>, Vivek Sehra<sup>a‡</sup> and Ashima Thomas<sup>b\*</sup>**

<sup>a</sup> Department of Soil Science and Agricultural Chemistry, Naini Agricultural Institute (NAI), Sam Higginbottom University of Agriculture Technology and Sciences, Prayagraj, 211 007 U.P., India.

<sup>b</sup> Department of Agro-Food Sciences and Technology, University of Bologna, Italy.

## **Authors' contributions**

This work was carried out in collaboration among all authors. All authors read and approved the final manuscript.

## **Article Information**

DOI: <https://doi.org/10.9734/mrji/2024/v34i51445>

## **Open Peer Review History:**

This journal follows the Advanced Open Peer Review policy. Identity of the Reviewers, Editor(s) and additional Reviewers, peer review comments, different versions of the manuscript, comments of the editors, etc are available here:

<https://www.sdiarticle5.com/review-history/116786>

**Original Research Article**

**Received: 07/03/2024**

**Accepted: 09/05/2024**

**Published: 14/05/2024**

## **ABSTRACT**

An experiment was conducted "to determine the influence of different level of NPK and Rhizobium on physico-chemical properties of soil, growth and yield attribute to black gram (*Vigna mungo* L. var. Shekhar-2) during Zaid season 2023-2024 at the Research farm Department of Soil Science

<sup>++</sup> M.Sc (Agri.) Soil Science;

<sup>#</sup> Associate Professor;

<sup>†</sup> Professor and Head;

<sup>‡</sup> Ph.D. Scholar;

\*Corresponding author: E-mail: [leo8thomas94@gmail.com](mailto:leo8thomas94@gmail.com);

**Cite as:** Gavel, P., Swaroop, N., Thomas, T., Sehra, V., & Thomas, A. (2024). Influence of Different Level of NPK and Rhizobium on Physico Chemical Properties of Soil, Growth and Yield Attribute of Blackgram (*Vigna mungo* L.) Var: Shekhar-2. *Microbiology Research Journal International*, 34(5), 38–47. <https://doi.org/10.9734/mrji/2024/v34i51445>

and Agricultural Chemistry, Naini Agriculture Institute, SHUATS, Prayagraj. The design applied was 3x3 factorial randomized complete block design having three levels of NPK @ 0, 50 and 100% ha<sup>-1</sup> and three levels of Rhizobium @ 0, 50 and 100% ha<sup>-1</sup> respectively. The soil samples from experimental site before conducting research operation, revealed that, soil is of sandy loam texture with neutral to alkaline in reaction and significantly highest in treatment T<sub>1</sub>. The result shows that application of different levels combination of inorganic fertilizers and improved soil chemical properties of black gram.

**Keywords:** Black gram; soil; NPK; Rhizobium; inorganic fertilizer; growth and yield.

## 1. INTRODUCTION

“Soil is a natural body consisting of layers (soil horizon) of mineral constituents of variable thickness which different from the parent material in their morphological, physical, chemical and mineralogical characteristics” (brady et al. 2016). “The annual production of black gram is about 24.5 lakh tones from about 4.6 million hectares of area, with an average productivity of 533 kg ha<sup>-1</sup> in 2021-22. It is a drought resistant crop grown both as a summer and Kharif crop” (directorate of pulses development, 2022).

“After cereals and oilseeds, pulses occupy an important place in Indian agriculture. The total world acreage under pulses is about 85.40 M ha with production of 87.40 Mt at productivity 1023kg ha<sup>-1</sup> production with 34 and 26% respectively with average productivity of 835 kg ha<sup>-1</sup>(Agricultural Statistics Division, Directorate of Economics and Statistics, 2019). 70% of the total world’s black gram and green gram production comes from India, of which black gram constitutes 1.65 Mt with the share of 12.4%” [1]. “Pulses are excellent source of high quality protein, essential amino acids, fatty acids, fibers, minerals and vitamins. The protein level of black gram is quite high i.e about 24 % with nutritional value of 10.9 % moisture, 1.4 % fats, 60.3 % carbohydrates and 3.4 % ash” [2]. It improves soil health by enriching nitrogen status and also maintains sustain ability of the cropping systems.

Black gram (*Vigna mungo* L.) is one of the important pulse crops grown throughout India. Proper fertilization is essential to improve the productivity of black gram [3,4]. It can meet its nitrogen requirements by symbiotic fixation of atmospheric nitrogen. The nutrients which need attention are phosphorus and sulphur [5-7]. Black gram is very much responsive to sulphur application. Both phosphorus and sulphur can improve the quality and quantity of the crop.

Hence, the present investigation was undertaken to find out the response of black gram to different levels of phosphorus, sulphur and PSB application [8,9].

“Nitrogen is vitally important for plant nutrient. Nitrogen is essential constituent of protein and is present in many other compound of great physiological importance in plant metabolism. Nitrogen is called a basic constituent of life. Phosphorus plays key roles in many plant processes such as energy metabolism, nitrogen fixation, synthesis of nucleic acids and membranes, photosynthesis, respiration and enzyme regulation. Phosphorus is critical to black gram yield because it is reported to stimulate growth, initiate nodule formation as well as influence the efficiency of the *Rhizobium* legume symbiosis” [10,11,12].

According to Oti et al. [13], “phosphorus decrease zinc concentration in the black gram grain, thereby affecting its nutritional quality. It is required for the physiological processes of protein synthesis and energy transfer in plants. Application of phosphorus has been reported by several authors to improve yield of black gram. Seed yield is, therefore, governed by number of factors which have a direct or indirect impact. Among these factors are yield components such as number of pods per plant, number of seeds per pod and 100 seed weight over a given land area”.

“Potassium play important role information of protein and chlorophyll and it provide much of osmotic “pull” that draw water into plant roots. Potassium produces strong stiff straw in maize and reduce lodging in maize. Potassium imparts increase vigor and disease resistance to plant” (Cobbinah et al. 2011).

“Rhizobia are symbiotic diazotrophs (prokaryotic organisms that carryout di-nitrogen fixation) that form a symbiotic association with legumes.

This association is symbiotic in that both the plant and rhizobia benefit. The plant supplies the rhizobia with energy in the form of amino acids and the rhizobia fix nitrogen from the atmosphere for plant uptake. The reduction of atmospheric dinitrogen into ammonia is the second most important biological process on earth after photosynthesis" (Singh, 2008).

The main aim of the whole research is to increase the soil physico-chemical property and hence will increase the productivity of black gram as well. Black gram is leguminous which automatically fix atmospheric nitrogen and if it combines with Rhizobium increase the nitrogen content in soil which will increase growth and yield of black gram, as well as increase the soil fertility

## 2. MATERIALS AND METHODS

A field experiment to study the "Effect of different level of NPK and Rhizobium on soil physico-chemical properties of black gram (*Vigna mungo* L. var. Shekhar-2)" was conducted at central research farm department of Soil Science and Agricultural Chemistry, SHUATS, Prayagraj. This area normally falls under the sub-tropical belt in the south east of Uttar Pradesh, where the summers are quite hot and the winters are moderately chilly. The location's highest temperature occasionally drops below 40°C and can reach up to 46°C to 48°C. Between 20 to 94% the relative humidity was present. Around 1100 mm of rain precipitation occurs yearly on average in this region. The experimental site is located 98 meters above sea level at 25°57'N latitude and 81°59' E longitude. The soil in the experimental region is classified as Inceptisol, and its texture is sandy loam (sand content: 62.71%; silt content: 23.10%; clay content: 14.1%). The experiment was setup using a randomized block design (RBD), which included nine treatments and three doses of NPK (0, 50, and 100%) and Rhizobium (0, 50, and 100%). Three replicates of the treatment have been made. There were 27 plots in total. Black gram sowing in 2 x 2 m plots during the *Zaid* season, with a spacing of 30 x 10 cm. Soil samples were taken from each plot both before and after the experiment at a depth of 0-15 to 15-30 cm by using a soil auger. The soil samples were air dried, put through a 2 mm screen, and then had their different soil qualities examined. M.L.

Jackson [14] assessed the soil pH with a pH meter, and Wilcox [15] measured the electrical conductivity (EC) with a conductivity meter. The available nitrogen (N) was calculated using the Subbiah and Asija method [16], the phosphorus (P) was calculated using the Olsen et al. method [17], the potassium (K) was calculated using the Toth and Prince method [18]. The soil organic carbon (SOC) was estimated using the Walkley and Black method.

## 3. RESULTS AND DISCUSSION

### 3.1 Bulk Density ( $\text{Mg m}^{-3}$ )

"The response bulk density of soil was found to be non-significant in levels of NPK and Rhizobium. The maximum bulk density of soil was recorded 1.293  $\text{Mg m}^{-3}$  at 0-15 cm and 1.294  $\text{Mg m}^{-3}$  at 15-30 cm in treatment T<sub>9</sub> (NPK @ 100 % + Rhizobium @ 100 %) followed by 1.291  $\text{Mg m}^{-3}$  at 0-15 cm and 1.289  $\text{Mg m}^{-3}$  at 15-30 cm in treatment T<sub>8</sub> (NPK @ 100 % + Rhizobium @ 50 %) and minimum bulk density of soil was recorded 1.241  $\text{Mg m}^{-3}$  at 0-15 cm and 1.251  $\text{Mg m}^{-3}$  at 15-30 cm in treatment T<sub>1</sub> [control (NPK @ 0 % + Rhizobium @ 0 %)] respectively" [4]. It was also observed the bulk density of soil was gradually increased with an increase in dose of different levels of NPK and Rhizobium. Similar result has been recorded by Kumar et al. [19], Reddyn et al. 2005 and Bhattacharya et al. [20].

### 3.2 Particle Density ( $\text{Mg m}^{-3}$ )

"The response particle density of soil was found to be non-significant in levels of NPK and Rhizobium. The maximum particle density of soil was recorded 2.515  $\text{Mg m}^{-3}$  at 0-15 cm and 2.525  $\text{Mg m}^{-3}$  at 15-30 cm in treatment T<sub>9</sub> (NPK @ 100 % + Rhizobium @ 100 %) followed by 2.509  $\text{Mg m}^{-3}$  at 0-15 cm and 2.521  $\text{Mg m}^{-3}$  at 15-30 cm in treatment T<sub>8</sub> (NPK @ 100 % + Rhizobium @ 50 %) and minimum particle density of soil was recorded 2.473  $\text{Mg m}^{-3}$  at 0-15 cm and 2.481  $\text{Mg m}^{-3}$  at 15-30 cm in treatment T<sub>1</sub> [control (NPK @ 0 % + Rhizobium @ 0 %)] respectively" [4]. It was also observed the particle density of soil was gradually increased with an increase in dose of different levels of NPK and Rhizobium. Similar result has been recorded by Hussain et al. [21]; Chintha et al. [22] and Dangi et al. [23].

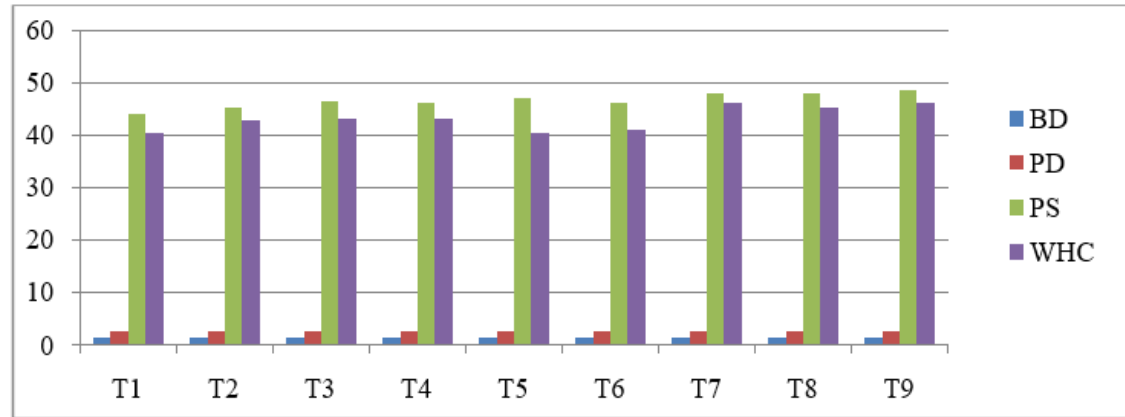


Fig. 1. Effect of different levels of NPK and Rhizobium on BD (Mg m<sup>-3</sup>), PD (Mg m<sup>-3</sup>), PS (%), and WHC (%) of soil depth (0-15 cm)

Table 1. Effect of NPK and Rhizobium on soil physical proper

Treatment	BD(Mg m <sup>-3</sup> )		PD(Mg m <sup>-3</sup> )		Pore space(%)		WHC(%)	
	0-15cm	15-30cm	0-15Cm	15-30cm	0-15cm	15-30cm	0-15cm	15-30cm
NPK @ 0 % +Rhizobium@0%	37.08	37.08	37.08	37.08	44.12	40.75	40.47	37.08
NPK@0%+Rhizobium@50%	37.21	37.21	37.21	37.21	45.22	44.19	42.94	37.21
NPK@0%+Rhizobium@100%	39.29	39.29	39.29	39.29	46.39	44.89	43.16	39.29
NPK@50%+Rhizobium@0%	39.62	39.62	39.62	39.62	46.19	45.09	43.21	39.62
NPK@50%+Rhizobium@50%	40.38	40.38	40.38	40.38	46.90	45.54	40.42	40.38
NPK@50%+Rhizobium@100%	40.63	40.63	40.63	40.63	46.10	45.55	41.03	40.63
NPK@100%+Rhizobium@0%	42.97	42.97	42.97	42.97	47.90	45.54	46.07	42.97
NPK@100%+Rhizobium@50%	43.07	43.07	43.07	43.07	48.11	47.2	45.09	43.07
NPK@100%+Rhizobium@100%	44.72	44.72	44.72	44.72	48.65	47.75	46.31	44.72
F-Test	NS	NS	NS	NS	S	S	S	S
S.Ed.(±)	-	-	-	-	0.60	0.70	0.65	0.50
C.D.at0.5%	-	-	-	-	1.81	2.71	1.97	1.51

### 3.3 Percent Pore Space (%)

“The response pore space of soil was found to be significant in levels of NPK and Rhizobium. The maximum pore space of soil was recorded 48.65 % at 0-15 cm and 47.75% at 15-30 cm in treatment T<sub>9</sub> (NPK @ 100 % + Rhizobium @ 100%) followed by 48.11% at 0-15cm and 47.20% at 15-30 cm in treatment T<sub>8</sub> (NPK @ 100% + Rhizobium @ 50%) and minimum pore space of soil was recorded 44.12% at 0-15 cm and 40.75% at 15-30 cm in treatment T<sub>1</sub>[control (NPK @ 0% + Rhizobium @ 0 %)] respectively”. [31] It was also observed the pore space of soil was gradually increased with an increase in dose of different levels of NPK and Rhizobium. Similar result has been recorded by Kumawat et al. [24], Azadi et al. [25] and Amurta et al. [26].

### 3.4 Water holding capacity (%)

The response water holding capacity of soil was found to be significant in levels of NPK and Rhizobium. The maximum water holding capacity of soil was recorded 46.31% at 0-15 cm and 44.72% at 15-30 cm in treatment T<sub>9</sub> (NPK @ 100% + Rhizobium @ 100%) followed by 45.09% at 0-15 cm and 43.07% at 15-30 cm in treatment T<sub>8</sub> (NPK @ 100% + Rhizobium @ 50%) and minimum water holding capacity of soil was recorded 40.47% at 0-15cm and 37.08% at 15-30 cm in treatment T<sub>1</sub> [control (NPK @ 0% + Rhizobium @ 0%)] respectively. It was also observed the water holding capacity (%) of soil was gradually increased with an increase in dose of different levels of NPK and Rhizobium. Similar result has been recorded by Kumawat et al. [24], Azadi et al. [25] and Amurta et al. [26].

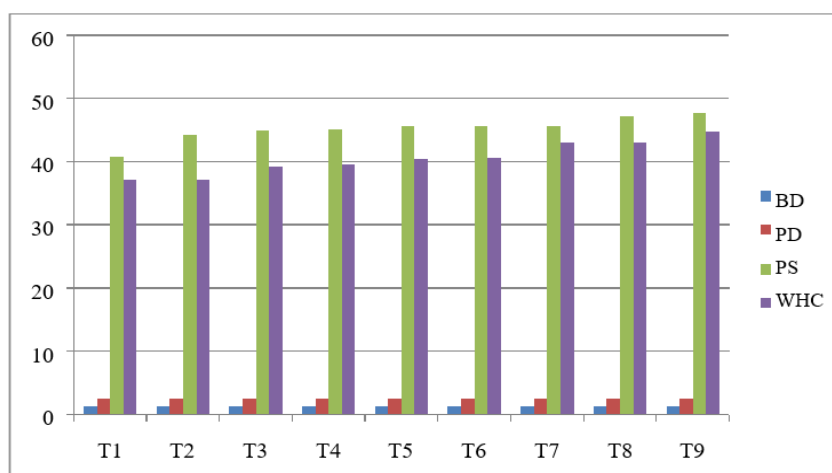


Fig. 2. Effect of different levels of NPK and Rhizobium on BD (Mg m<sup>-3</sup>), PD (Mg m<sup>3</sup>), PS (%), and WHC (%) of soil depth (15-30cm)

Table 2. Effect of NPK and Rhizobium on soil chemical properties

Treatment	pH		EC(dS m <sup>-1</sup> )		Organic carbon(%)	
	0-15 cm	15-30 cm	0-15 cm	15-30 cm	0-15 cm	15-30 cm
NPK@0%+Rhizobium@0%	7.29	7.31	0.443	0.446	0.385	0.378
NPK@0%+Rhizobium@50%	7.26	7.27	0.448	0.449	0.39	0.382
NPK@0%+Rhizobium@100%	7.25	7.26	0.452	0.453	0.394	0.386
NPK@50%+Rhizobium@0%	7.24	7.26	0.455	0.456	0.399	0.389
NPK@50%+Rhizobium@50%	7.25	7.25	0.459	0.463	0.402	0.391
NPK@50%+Rhizobium@100%	7.23	7.24	0.463	0.467	0.405	0.396
NPK@100%+Rhizobium@0%	7.22	7.23	0.461	0.471	0.405	0.403
NPK@100%+Rhizobium@50%	7.21	7.22	0.471	0.475	0.406	0.403
NPK@100%+Rhizobium@100%	7.20	7.21	0.475	0.480	0.407	0.409
F-Test	NS	NS	NS	NS	NS	NS
S.Ed.(±)	-	-	-	-	-	-
C.D.at0.5%	-	-	-	-	-	-

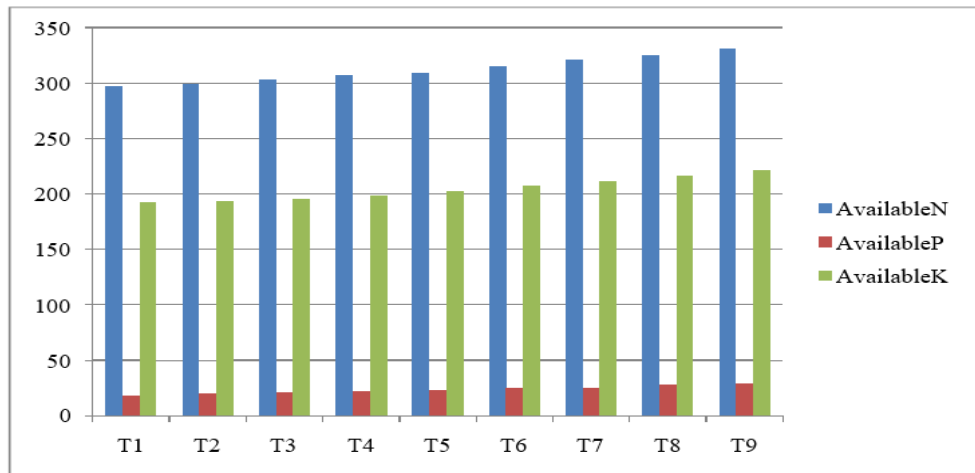


Fig. 3. Effect of different levels of NPK and Rhizobium on Available N(kg h<sup>-1</sup>), P(kg h<sup>-1</sup>), and K (kg h<sup>-1</sup>), of soil depth (0-15 cm)

Table 3. Effect of NPK and Rhizobium on soil chemical propertie

Treatment	Available Nitrogen (kg ha <sup>-1</sup> )		Available Phosphorus (kg ha <sup>-1</sup> )		Available Potassium(kg ha <sup>-1</sup> )	
	0-15 cm	15-30 Cm	0-15 cm	15-30 cm	15-30 Cm	15-30 cm
	NPK@0%+Rhizobium@0%	297.15	291.32	18.42	14.15	192.32
NPK@0%+Rhizobium@50%	299.68	294.54	20.36	15.27	193.54	189.42
NPK@0%+Rhizobium@100%	303.42	297.35	21.27	16.46	196.05	191.46
NPK@50%+Rhizobium@0%	306.72	302.28	22.52	18.33	198.38	194.02
NPK@50%+Rhizobium@50%	309.46	304.6	23.48	18.24	202.65	197.8
NPK@50%+Rhizobium@100%	315.08	309.32	24.96	20.97	207.82	201.56
NPK@100%+Rhizobium@0%	321.36	315.45	25.05	20.13	211.25	206.25
NPK@100%+Rhizobium@50%	325.17	320.62	27.82	22.57	216.38	212.74
NPK@100%+Rhizobium@100%	331.45	327.18	29.14	24.31	221.29	217.62
F-Test	S	S	S	S	S	S
S.Ed.(±)	4.42	5.05	0.40	0.222	2.92	3.43
C.D.at0.5%	13.31	15.21	1.23	0.67	8.79	10.35

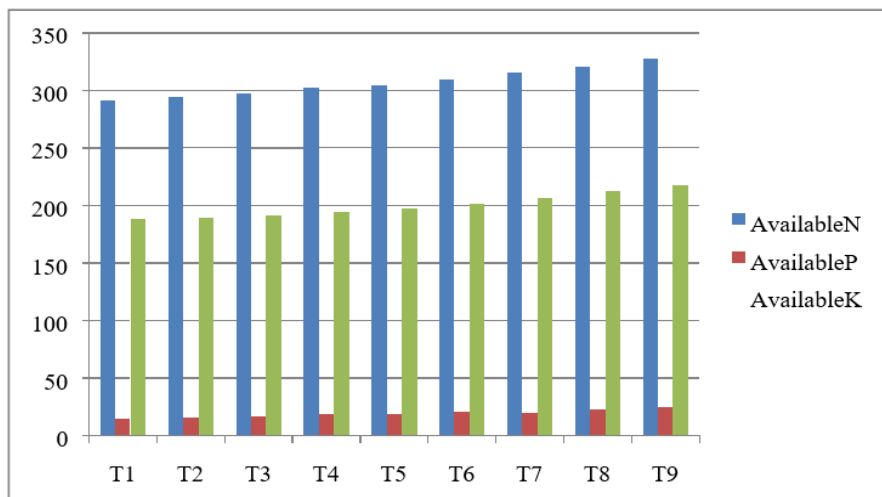


Fig. 4. Effect of different levels of NPK and Rhizobium on Available N (kg h<sup>-1</sup>), P (kg h<sup>-1</sup>), and K (kg h<sup>-1</sup>), of soil depth (15-30 cm)

**Table 4. Effect of different cost benefit ratio (C:B) of different treatment combination of black gram**

Treatment	Yield (q ha <sup>-1</sup> )	Selling Price (₹ q <sup>-1</sup> )	Gross return (₹ ha <sup>-1</sup> )	Total cost of cultivation (₹ ha <sup>-1</sup> )	Net profit (₹ ha <sup>-1</sup> )	Benefit Cost ratio (B: C)
T <sub>1</sub>	7.90	9600	75840	42250.00	33590	1:1.79
T <sub>2</sub>	9.17	9600	88032	44716.00	43316	1:1.96
T <sub>3</sub>	9.46	9600	90816	47182.00	43634	1:1.92
T <sub>4</sub>	9.85	9600	94560	44759.00	49801	1:2.11
T <sub>5</sub>	10.33	9600	99168	47225.00	51943	1:2.09
T <sub>6</sub>	10.67	9600	102432	49691.00	52741	1:2.06
T <sub>7</sub>	11.18	9600	107328	47268.00	60060	1:2.27
T <sub>8</sub>	11.55	9600	110880	49734.00	61146	1:2.22
T <sub>9</sub>	12.5	9600	120000	52200.00	67800	1:2.30

### 3.5 pH of Soil w/v (1:2.5)

The response pH of soil was found to be non-significant in levels of NPK and Rhizobium. The maximum pH of soil was recorded 7.20 at 0-15 cm and 7.21 at 15- 30 cm in treatment T<sub>9</sub> (NPK @ 100% + Rhizobium @ 100%) followed by 7.21 at 0-15 cm and 7.22 at 15-30 cm in treatment T<sub>8</sub> (NPK @ 100% + Rhizobium @ 50%) and minimum pore space of soil was recorded 7.29 at 0-15 cm and 7.31 at 15-30 cm in treatment T<sub>1</sub> [control (NPK @ 0% + Rhizobium @ 0%)] respectively. It was also observed the pH of soil was gradually increased with an increase in dose of different levels of NPK and Rhizobium. Similar result has been recorded by Soheli et al. [27]; Chandrakar, [28] and Jha et al. [29].

### 3.6 Electrical Conductivity (dS m<sup>-1</sup>)

The response Electrical Conductivity of soil was found to be non-significant in levels of NPK and Rhizobium. The maximum Electrical Conductivity of soil was recorded 0.475 dSm<sup>-1</sup> at 0-15 cm and 0.480 dS m<sup>-1</sup> at 15-30 cm in treatment T<sub>9</sub> (NPK @ 100 % + Rhizobium @ 100%) followed by 0.471 dSm<sup>-1</sup> at 0-15 cm and 0.475 dSm<sup>-1</sup> at 15-30 cm in treatment T<sub>8</sub> (NPK @ 100 % + Rhizobium @ 50%) and minimum EC of soil was recorded 0.443 dSm<sup>-1</sup> at 0-15 cm and 0.446 dSm<sup>-1</sup> at 15-30 cm in treatment T<sub>1</sub> [control (NPK @ 0% + Rhizobium @ 0%)] respectively. It was also observed the pH of soil was gradually increased with an increase in dose of different levels of NPK and Rhizobium. Similar result has been recorded by Soheli et al. [27]; Chandrakar, [28] and Jha et al. [29].

### 3.7 Organic Carbon (%)

The response organic carbon of soil was found to be non-significant in levels of NPK and Rhizobium. The maximum organic carbon of soil was recorded 0.407% at 0-15cm and 0.409% at 15-30 cm in treatment T<sub>9</sub> (NPK @ 100% + Rhizobium @ 100%) followed by 0.406 % at 0-15 cm and 0.403% at 15-30 cm in treatment T<sub>8</sub> (NPK @ 100% + Rhizobium @ 50%) and minimum organic carbon of soil was recorded 0.385% at 0-15 cm and 0.378% at 15-30 cm in treatment T<sub>1</sub> [control (NPK @ 0% + Rhizobium @ 0%)] respectively. It was also observed the pH of soil was gradually increased with an increase in dose of different levels of NPK and Rhizobium. Similar result has been recorded by Soheli et al. [27]; Chandrakar, [28] and Jha et al. [29].

### 3.8 Available Nitrogen (kg ha<sup>-1</sup>)

The response Available Nitrogen of soil was found to be significant in levels of NPK and Rhizobium. The maximum Available Nitrogen of soil was recorded 331.45 kg ha<sup>-1</sup> at 0-15 cm and 327.18 kg ha<sup>-1</sup> at 15-30 cm in treatment T<sub>9</sub> (NPK @ 100 % + Rhizobium @ 100%) followed by 325.17 kg ha<sup>-1</sup> at 0-15 cm and 320.62 kg ha<sup>-1</sup> at 15-30 cm in treatment T<sub>8</sub> (NPK @ 100% +Rhizobium @ 50%) and minimum available nitrogen of soil was recorded 297.15 kg ha<sup>-1</sup> at 0-15cm and 291.32 kg ha<sup>-1</sup> at 15-30 cm in treatment T<sub>1</sub> [control (NPK @ 0% + Rhizobium @ 0%)] respectively. It was also observed the pH of soil was gradually increased with an increase in dose of different levels of NPK and Rhizobium. Similar result has been recorded by Soheli et al. [27]; Chandrakar, [28] and Jha et al. [29].

### 3.9 Available Phosphorus (kg ha<sup>-1</sup>)

The response available phosphorus of soil was found to be significant in levels of NPK and Rhizobium. The maximum available phosphorus of soil was recorded 29.14 kg ha<sup>-1</sup> at 0-15 cm and 24.31 kg ha<sup>-1</sup> at 15-30 cm in treatment T<sub>9</sub> (NPK @ 100% + Rhizobium @ 100%) followed by 27.82 kg ha<sup>-1</sup> at 0-15 cm and 22.57 kg ha<sup>-1</sup> at 15-30 cm in treatment T<sub>8</sub> (NPK @ 100% + Rhizobium @ 50%) and minimum available phosphorus of soil was recorded 18.42 kg ha<sup>-1</sup> at 0-15 cm and 14.15 kg ha<sup>-1</sup> at 15-30 cm in treatment T<sub>1</sub> [control (NPK @ 0% + Rhizobium @ 0%)] respectively. Similar result has been recorded by Sharma et al. [30]; Javeed et al. 2017 and Sammauria, [31].

### 3.10 Available Potassium (kg ha<sup>-1</sup>)

The response available potassium of soil was found to be significant in levels of NPK and Rhizobium. The maximum available potassium of soil was recorded 221.29 kg ha<sup>-1</sup> at 0-15 cm and 217.62 kg ha<sup>-1</sup> at 15-30 cm in treatment T<sub>9</sub> (NPK @ 100% + Rhizobium @ 100%) followed by 216.38 kg ha<sup>-1</sup> at 0-15 cm and 212.74 kg ha<sup>-1</sup> at 15-30 cm in treatment T<sub>8</sub> (NPK @ 100 % + Rhizobium @ 50%) and minimum available potassium of soil was recorded 192.32 kg ha<sup>-1</sup> at 0-15 cm and 188.25 kg ha<sup>-1</sup> at 15-30 cm in treatment T<sub>1</sub> [control (NPK @ 0 % + Rhizobium @ 0%)] respectively. Similar result has been recorded by Sharma et al. [30]; Javeed et al., 2017 and Sammauria, [31].

## 4. CONCLUSION

From trial it was concluded that the various level of NPK and Rhizobium used from different sources fertilizers [*i.e.* Urea (46 % N), + SSP (16 % P<sub>2</sub>O<sub>5</sub>) + MOP (60 % K<sub>2</sub>O) + Rhizobium] in the experiment gave the best result in the treatment T<sub>9</sub> (NPK @ 100 % + Rhizobium @ 100 %) followed by treatment T<sub>8</sub>, in T<sub>9</sub> the soil health parameters retained the suitable soil properties, yield attributes and yield of black gram and gave highest net profit of 68080.00 ₹ ha<sup>-1</sup> with highest cost benefit ratio is 1:2.30. Therefore, it can be recommended for farmers to obtain best combination Treatment (T<sub>9</sub>) for higher farm income and sustainable agriculture.

## ACKNOWLEDGEMENT

I am grateful for ever-inspiring guidance, constant encouragement, keen interest and

scholarly comments and constructive suggestions throughout the course of my studies and investigation from head of the department and staff, department of soil science and agricultural chemistry, Sam Higginbottom University of Agriculture, Technology and Sciences, Prayagraj, Uttar Pradesh.

## COMPETING INTERESTS

Authors have declared that no competing interests exist.

## REFERENCES

1. Elzebroek T, Wind K. Guide to Cultivated Plants. CAB International, United Kingdom. 2008;262.
2. Shroti SK, Pathak A, Tiwari A, Gupta A, Chauhan SK. Morphological, physiological and yield analysis of black gram under different levels of FYM, PSB and phosphorus. International Journal of Chemical Studies. 2018;6(3):403-411.
3. Walkley A, Black IA. Estimation of soil organic carbon by the chromic acid titration method. Soil Sci. 1947;29:38.
4. Pongener P, David AA, Thomas T, Hasan A, Reddy IS. Effect of organic and inorganic source of nutrients on physio-chemical properties of soil in black gram (*Vigna mungo* L.) Var. Sekhar-2.
5. Bethlenfalvay GJ, Pacovsky RS, Bayne HG, Stafford AE. Interactions between nitrogen fixation, mycorrhizal colonization, and host-plant growth in the Phaseolus rhizobium-glomus symbiosis. Plant Physiology. 1992;70(2):446-450.
6. Black CA. Methods of soil analysis part – ii. Chemical and microbiological properties. Agronomy monograph no. 9. American society of agronomy, inc. Madison, wisconsin, usa, 1965;18-25.
7. Fisher RA. Statistical methods and scientific induction. J R Stat Soc S. 1960; 17:69-78.
8. Kachroo P. Pulse crops of india. Icar, new delhi. 1970;148.
9. Muthuvel P, Udayasoorian C, Natesan R, Ramaswamy PP. Introduction to soil analysis. Coimbatore: Tamil Nadu Agricultural University-641002; 1992.
10. Ndakidemi PA, Dakora FD. Yield components of nodulated black gram



- (*Vigna unguiculata*) and maize plants grown with exogenous phosphorus in different cropping systems. Aust. J Exp. Agric. 2007;47:583-589.
11. Rautaray SR, Guldekar DD. Studies on synergistic effect of dual inoculation of Rhizobium, PSB and antagonistic bacteria on nodulation and grain yield of cowpea [*Vigna unguiculata* (L.) Walp]. Annals of Plant Physiology. 2003;17(1):78-80.
  12. Reddy S, Jitendra KM, Thenua OVS, Jat HS. Effect of phosphorus and bio fertilizer on productivity nutrient uptake and economics of black gram. Legume Res. 2005;36(1):41-48.
  13. Oti NN, Uzoho BU, Opara CC. Determination of phosphorus requirement of black gram using P-sorption isotherm. Int. J Agric. Rural Dev. 2004;5:77-85.
  14. Jackson ML. Soil chemical analysis Prentice Hall of India Ltd. New Delhi. 1958:219-21.
  15. Wilcox LV. Electrical conductivity. Water Works Assoc. 1950;42(8):775-6.
  16. Subbiah BV, Asijja EC. A rapid procedure for estimation of available nitrogen in soil. Current Science. 1956;25(8): 259-60.
  17. Olsen SR, Cole CV, Watanabe FS, Dean LA. Estimation of available phosphorus in soils by extraction with sodium bicarbonate (NaHCO<sub>3</sub>). Dairy Australia. 1954;939:1-19.
  18. Toth SJ, Prince AL. Estimation of cation exchange capacity and exchangeable Ca, K and Na content of soil by flame photometer technique. Soil Sci. 1949;67 (6):439-46.
  19. Kumar J, Sharma P, Meena S. Physicochemical properties of the soil, under the two forest plantation stands around Varanasi (U.P.), India; 2008.
  20. Bhattacharya VP, Mani AK, Thilagvathi T. Effect of sources and levels of phosphorus and P solubilizers on yield and nutrient uptake in rainfed green gram. Annals of Arid Zone. 2004;40:43-8.
  21. Hussain M, Tahir M, Majeed MA. Effect of zinc sulphate as soil application and seed treatment on black gram (*Vignamungo* L.). Pakistan Journal Life Society Science. 2022;12(2): 87-91.
  22. Chinthra P, Alka Y, Choudhary BL, Puniya MM. Response of integrated phosphorus management on nodulation and productivity of mungbean on typic ustipsamment. Green farming. 2021;5:222-225.
  23. Dangi A, Kumar S, Singh S, Omkar, Singh BP. Effect of phosphorus and sulphur fertilization on productivity and nutrient uptake of black gram. Ann Agric Res New S. 2020;35(1):54-7.
  24. Kumawat N, Sharma OP, Kumar R. Effect of organic manures, psb and phosphorus fertilization on yield and economics of mungbean (*vigna radiata* l.) Environment & ecology. 2013;27(1): 5-7.
  25. Azadi E, Rafiee M, Hadis N. The effect of different nitrogen levels on seed yield and morphological characteristic of mungbean in the climate condition of Khorramabad. Annals of Biological Research. 2013; 4(2):51-5.
  26. Amruta N, Devaraju PJ, Mangalagowri Kiran SP, Ranjitha HP, Kalavati P. Effect of integrated nutrient management and spacing on seed quality parameters of black gram cv. Lbg-625 (rashmi). Journal of Applied and Natural Science. 2017;8 (1):340-345.
  27. Sohail MH, Miah MR., Mohiuddin SJ, Islam AKMS, Rahman MM, Haque MA. Correlation and path coefficient analysis of black gram (*vigna mungo* l.). Journal of bioscience and agriculture research. 2017;07(02):621-629.
  28. Chandrakar K, Verma SK, Dubey S, Kesari R. Yield gap analysis of black gram through front line demonstration under rainfed condition. Int J Chem Stud. 2018;6 (4):3173-6.
  29. Jha DP, Sharma SK, Amarawat T. Effect of organic and inorganic sources of nutrients on yield and economics of black gram (*Vignamungo*) grown during Kharif. Agric Sci. 2015;35(3):224-8.
  30. Sharma SN, Prasad R, Shivay YS, Dwivedi MK, Kumar S, Kumar D. Effect of rates and sources of phosphorus on productivity and economics of black gram as influenced by crop-residue incorporation. Indian Journal of Agronomy. 2009;54(1): 42-6.
  31. Sammauria R, Yadav RS. Effect of phosphorus and zinc application of growth

and yield of Black gram and their residual effect on succeeding pearl millet (*Pennisetum graucum*) under irrigated

conditions of North West Rajasthan. Indian Journal of Agricultural Sciences. 2008;78: 61-64.

---

© Copyright (2024): Author(s). The licensee is the journal publisher. This is an Open Access article distributed under the terms of the Creative Commons Attribution License (<http://creativecommons.org/licenses/by/4.0>), which permits unrestricted use, distribution, and reproduction in any medium, provided the original work is properly cited.

*Peer-review history:*

*The peer review history for this paper can be accessed here:*

<https://www.sdiarticle5.com/review-history/116786>