



# Assessing Sustainable Development Goals Implementation in Pasuruan's Great Disability House

Sandiani Sri Wahyuni <sup>a\*</sup>, Sakinah Ilfi Nabilah <sup>a</sup>, Khusnudin <sup>a</sup>  
and Guntur Kusuma Wardana <sup>a</sup>

<sup>a</sup> Islamic Banking Study Program, Faculty of Economics, UIN Maulana Malik Ibrahim Malang, Indonesia.

## **Authors' contributions**

*This work was carried out in collaboration among all authors. All authors read and approved the final manuscript.*

## **Article Information**

DOI: 10.9734/AJEBA/2023/v23i221135

## **Open Peer Review History:**

This journal follows the Advanced Open Peer Review policy. Identity of the Reviewers, Editor(s) and additional Reviewers, peer review comments, different versions of the manuscript, comments of the editors, etc are available here: <https://www.sdiarticle5.com/review-history/107617>

**Original Research Article**

**Received: 06/08/2023**

**Accepted: 13/10/2023**

**Published: 26/10/2023**

## **ABSTRACT**

Sustainable development is a form of achieving social justice for every generation that aims to support economic growth based on social and environmental development. Pasuruan City as one of the cities in Pasuruan Regency which forms a sustainable development program by presenting Great Disability House which was established to facilitate persons with disabilities in Pasuruan City to receive various skills training. The purpose of this study was to determine the goals of sustainable development at Great Disability Home based on OJK (Authority Service Finance) sustainable indicators, and the role of Great Disability House in the sustainable development of Pasuruan City. To conduct research related to these objectives, researchers used a mix-method approach, namely a quantitative method on the results of direct interviews with Great Disability House in Pasuruan City, and a qualitative method with an indicators of sustainable development goals in Indonesia study approach. The results of the study show that indicators of sustainable development can be identified as follows: (1) ecologically sustainable, through creating salable products through

\*Corresponding author: E-mail: sandianiwahyuni30@gmail.com;

recycling both organic and inorganic waste; (2) economic sustainability, through good product marketing through an online sales platform where the output is able to prosper the members of Great Disability House; (3) socio cultural sustainability, through handmade craft products that reflect the local culture of Pasuruan City (4) sustainable politics, defense and security, through the creation of various types of products that do not oppose elements of SARA (Ethnicity, Religion, Race, and Inter-group), elements of political campaign means and elements of plagiarism.

*Keywords: Sustainable development; OJK; great disability house.*

## 1. INTRODUCTION

Sustainable development is a concept of balanced development which includes three processes in it, namely economic, social and environmental [1]. The three processes become one unity where is the one process affect other processes. Aspect economy and social will produce justice in relationship. Whereas between aspect social And environment expected capable Keep going survive. So that these three processes realize creation sustainable conditions [2]. The concept of sustainable development is optimizing the benefits of resources within the framework of shared development. Besides notice factor economy and social, development Also must consider balance to environment live for impact negative no influence generation in time future [3]. In accordance in draft development, goals development sustainable is to accommodate all changes that are universal or comprehensive through several goals which are then measured based on various achievement indicators. So it is important to understand the link between goals and indicators so that targets can be achieved. Indicators in measuring the achievement of sustainable development goals in optimizing resources can be seen through optimizing resources in small lines, for example at the regional or city level. The City of Pasuruan, which is present through the Great House for Disabilities, plays a role in realizing the achievement of sustainable development goals that is through effort For repair quality life with still try no go beyond ecosystem supporters his life [2].

According to Armi et al. [4] Achieving sustainable development goals can be started through an approach to human development, and the presence of the Great House for Disabilities is one form of the Pasuruan City government's efforts in developing Pasuruan City. Great Disability House or Rumah Hebat Disabilitas it self is a grant house from the Pasuruan City government which is given to people with disabilities in Pasuruan City to express their

abilities in the field of entrepreneurship. Great Disability House prints members with disabilities so they are able to compete in responding to the challenges of the world of work by providing various job training. The training provided includes: (1) Training in the field of processed food and snacks such as catering and various processed chips; (2) in the field of crafts such as: Calligraphy and Embroidery; (3) in the field of printing such as screen printing, masks, etc.

The presence of the Great House for Disabilities is a place for creativity for persons with disabilities so that they are able to continue to innovate and develop following current developments in the work industry through entrepreneurial activities. In accordance with the word of Allah in surah An-Nur Verse 61 which means: "There is no obstacle for the blind, not (also) for the disabled, not (also) for people who are sick, and not (also) for yourself, eat (together) -with them) at your house, your fathers, at your mothers' house, at your brothers' house....., there is no obstacle for you to eat with them or separately." The verse explains that Allah gives equality to every of His servants including persons with disabilities to fulfill their rights in this world including entrepreneurship and work as a form of realizing sustainable development through human development Armi et al. [4].

Remember resource increasingly nature A little because fast development. Armi et al. [4] explain that draft sustainable development need approach to draft development to human. According to Jazuli [5] Approach the use indicator development in framework give well being life man covers level hope life, decline level death baby, and literate letter as well as technology. On country growing, approach development can We Look based on its characteristics as following:

- a) Focused development on dimensions addressed social \_ to group target in fulfil need tree like service health And Also gift

adequate nutrition, sanitation, level education and income .

- b) Development on sector social aim realize justice, level even distribution And creation well being society.
- c) Based development on environment with notice element and quality environment to stay awake for generation future.

Characteristic features above, give description in development sustainable, where aim in support growth possible economy \_ be measured through level even distribution economy and decline level poverty Iswanaji et al. [6]. However in the practice No easy and needed collaboration between three influential component \_ to success development sustainable that is Government, Community, and Private.

According to Suparmoko [7] in his research entitled "The Concept of Sustainable Development". In National Development Planning and Regional" stated that planning development sustainable needed the device to be base in development. A number of pillar development used \_ that is facet economic, social and \_ Also environment. Where third element the must balanced. So that draft the intended development No only focus on One sector just that is economy but exists continuity And harmony from third element the. Even required about Wrong One element success development sustainable that is located on social capital that is through connection Work same good between various party among them institution government , parties private , and Also public in formulate plans , policies , and strategy referring development on environment .

According to Setianingtias et al. [8] in his research entitled "Modeling Indicator Sustainable Development Goals in Indonesia" explains about development sustainable own four dimensions among them economic, social, environmental and institutional. Study this be material in analyze correlation and linkages between indicator and dimensions in development sustainable. Researcher use PLS SEM method in reduction every indicator. Results selection indicator show there is more of fifty \_ later indicators \_ reduced become nine mercy indicators that have linkages and continuity with development sustainable. Modeling with SEM PLS give description that between dimensions give positive results, except institutional and environment.

According to Setiadi et al. [9] in his research entitled "Indicators of Sustainable Development in Semarang City" explained that balance on every aspect Good aspect economic, social, and Also environment really important. In reach balance needed indicator in know level its effectiveness. Researcher use method qualitative through a number of approach studies exploratory and comparative. Results study show a number of indicators used. Not yet characteristic representative Where part big drip weight on aspect economy And Also social just. Where as a number of other indicators like government And specifically environment life not enough get attention in a manner special. By Because only some SPM that can used as base indicator development sustainable. From 30 affairs Semarang City Government (which consists of over 25 affairs must and 5 affairs option), indicator grouped into 23 affairs. Because No all affairs own linkages direct with theme development sustainable, Of 23 affairs the produced 148 indicators. Indicator the Then defined as indicator development sustainable city of Semarang. Indicator development sustainable.

## 2. METHODS

The methodology used in this study is a mix-method approach, namely a quantitative method based on the results of direct interviews with the Great House of Pasuruan City, and a qualitative method descriptive obtained \_ through descriptive data [10] that is study approach to indicators of sustainable development goals in Indonesia. The unit of analysis used as the research object is Great Disability House which is the research population. Primary data in this study were obtained through direct interviews at the Great House of Pasuruan City. Secondary data was obtained through library research and literature review studies. The scope of the data used is in the form of scientific publication articles on sustainable development originating from accredited national journals from the Garuda website (Garba Reference Digital) and Google Scholar. The researcher directly conducted an analysis of the problems in the data obtained, namely regarding Great Disability House.

## 3. RESULTS AND DISCUSSION

### 3.1 Geographical Situation of Pasuruan City

Pasuruan is a city in the province of East Java, Indonesia. Pasuruan City is located at 7° 35'-7°

South Latitude and 45°-112° 55' East Longitude is one of the level II regions in East Java Province. The average area in Pasuruan City is lowland with a height of about 4 meters above sea level with the northern border of the Madura Strait and Sidoarjo Regency, in the south it is bordered by Malang Regency, in the west it is bordered by Mojokerto Regency and Batu City and in the east it is bordered by Kabupaten Probolinggo, and northwest of Denpasar City, Bali. And the entire area of Pasuruan City is bordered by Pasuruan Regency Robert & Brown [1].

From an administrative perspective, the area of Pasuruan City is 35.29 km<sup>2</sup> and is divided into 4 districts including: (1) Gadingrejo District (2) Purworejo District; (3) Bugul Kidul District; (4) Panggungrejo District. The urban area of Pasuruan, like the rest of the island, has a humid tropical climate influenced by the west and east monsoons. The western and eastern rainy seasons cause two seasons, namely the rainy season and the dry season.

### 3.2 State of Government

The Pasuruan City area is divided into 4 sub-districts with a total of 34 sub districts, including: (1) Gadingrejo sub district includes 8 sub districts, namely: Gadingrejo, Bukir, Karangketuk, Krapyakrejo, Randusari, Sebani, Petahunan; (2) Purworejo District includes 7 sub districts, namely: Purutrejo, Sekargadung, Tembokrejo, Wirogunan, Pohjentrek, Purworejo; (3) Bugul Kidul District includes 6 sub districts, namely: Tapaan, Bugul Kidul, Kepel, Krampyangan, Blandongan, Bakalan; (4) The Panggungrejo sub-district includes 13 sub districts, namely: Kandang sapi, Mandaranrejo, Panggungrejo, Tambaan, Trajeng, Petamanan, Ngemplakrejo, Kebonsari, Bugul lor, Bangilan, Karanganyar, Mayangan, Pekuncen [11].

Pasuruan City itself has a vision, mission and objectives of the 2021-2020 Pasuruan City Regional Medium-Term Development Plan (RJMD) 6 which must be realized with Good as effort realization development in a manner sustainable [12].

The vision of Pasuruan City is to make Pasuruan City a developed city its economy, its beautiful city, and the harmony of its citizens (Medina). In order to realize the vision of Pasuruan City, the City development mission was formed Pasuruan in 2021 until 2026 namely:

- 1) Accelerating Growth and Sustainability of Local Potential-Based Economies to Create Jobs and Reduce Poverty
- 2) Building a Beautiful and Comfortable City with Sustainable Economic and Community Infrastructure Connections
- 3) Harmonious Multicultural Community Life With Strong Social Capital And Guaranteed Equal Access To Education And Health
- 4) Change Public Services Effortlessly And Quickly With The Help Of Adaptive Digitalization Of Government And Bureaucracy [13].

The Development Goals of Pasuruan City in the regional development plan through the 2023 Development Planning Meeting (Musrenbang) by the Mayor of Pasuruan are as follows:

- 1) With the theme of regional development, we harmonized proposals from the sub-district, sub-district and DPRD main ideas.
- 2) Priority agreements and program of activities to be carried out in 2023.
- 3) Build a joint commitment to monitor the implementation of development priorities in 2023 [14].

### 3.3 Macro and Socio-Economic Conditions of Pasuruan City

#### 3.3.1 Poverty

Pasuruan City is a small city with an area of 36.58 km with a population density in 2019 of around 200,000 people. Oeang Market is the nickname of the ancient people for Pasuruan City, because of the crowded trade in Pasuruan in ancient times, precisely at Tanjung Pottery Port which was able to attract many traders to come to Pasuruan.

At the time, the condition of the people was prosperous, all lived well, no one lacked. However, the economic condition of Pasuruan City is not as successful as in the past. Currently, the condition of the community is quite poor by glancing at the many cases of poverty in Pasuruan City.

The number of poor people in Pasuruan City reached 13.02 thousand people with the total poverty line reaching IDR 486,893 per capita and in percentage terms there were around 6.37% of poor people. However, in 2022, it decreased by 0.51 percentage points compared to 2021.

Therefore, the role of the government is the most important to overcome poverty related problems in Pasuruan City.

### 3.3.2 Human development index

As is known that Pasuruan City as an industrial city has growth potential in micro businesses, especially in the fields of industry and trade so that it has a high enough potential for small micro businesses to grow and develop. As stated in the Regional Regulation regarding the Regional Spatial Plan 2021 until 2041, it is a development based on the environment. That way, sustainable development goals in the context of micro enterprises can be achieved while still paying attention to the impact on the surrounding environment.

Based on the Pasuruan City Regional Development Plan above, it shows that the potential development of micro, small and medium enterprises in Pasuruan City is able to become the main support for the economy of Pasuruan City. However, in its implementation, the human resource factor sometimes becomes a real obstacle, and becomes a benchmark for success in sustainable development.

The Human Development Index in Pasuruan City is 76.54 in 2022 with a growth rate of 1.22%. This shows the potential of human development through the presence of a social community called "Rumah Hebat Disability" or Great Disability House in Pasuruan City. So that the implementation of Sustainable Development through micro enterprises based on Great Disability House, in the future can be used as a reference in realizing human development.

### 3.3.3 Employment

Employment conditions in Pasuruan City are experiencing a positive trend. Especially after the end of the second wave of Covid-19. Based on data from the Central Statistics Agency of Pasuruan City in 2022, it is known that the working city population is 104,977 people with a percentage of 68.05%.

The service sector is the main employment business with the largest percentage compared to other sectors, which is 68.92%. Then there is the manufacturing sector by 26.76% and the agricultural sector by 4.33%. With the increasing labor force participation rate, the unemployment rate in 2022 decreased by 0.05% compared to 2021.

### 3.4 Great Disability House, Pasuruan City

In several areas, there are still many persons with disabilities who live in less productive conditions. In a sense, some of them seem less confident when faced with various public issues. Unfortunately, this is often taken for granted by able-bodied people because of their physical limitations and accessibility.

Persons with disabilities as part of the social community also have added value that must be developed and shown to the wider community. Physical limitations are not an obstacle for the strong and tall. They can also be productive at work in their own way. Both in the fields of education, business creative, arts etc. They also have the right to show their existence in front of other people.

Although, the stigma of "the majority of society" is still attached in many circles that persons with disabilities are people who must receive social assistance, cannot do much, are less effective and tend to be looked down upon. This indirectly reduces their workspace and design. In fact, they also have extraordinary potential if given a special space and special opportunities for presentations.

Therefore, the municipal government of Pasuruan has prepared an activity center for persons with disabilities as effort in development sustainable. This place is expected to accommodate all the creativity of persons with disabilities. "Head of the Pasuruan City Social Service, Kokoh Arie Hidayat, said the activity center will be named "Great Disability House". Great Disability House was pioneered by the Chairperson of the Indonesian Motor Disabilities (DMI) in Pasuruan City, a person with disabilities, namely Mr. Muhammad Mabur with the aim of inviting people with disabilities to dare to be confident with their skills and achievements. With thereby expected the more increasing creativity And productivity so objective development of Pasuruan City can achieved in a manner sustainable Arsvendo et al. [15].

The disabled house is located in a former telecenter building, Krampyangan Village, Bugul Kidul District, Pasuruan City. Great Disability House was established to facilitate activities for people with disabilities in Pasuruan City to get the opportunity to take part in various skills training. Most of the members who joined the Great House Disabilities are disabled, blind, and

deaf people. It is hoped that the presence of Great Disability House will provide motivation and enthusiasm for persons with disabilities to dare to work and compete, especially in the world of work.

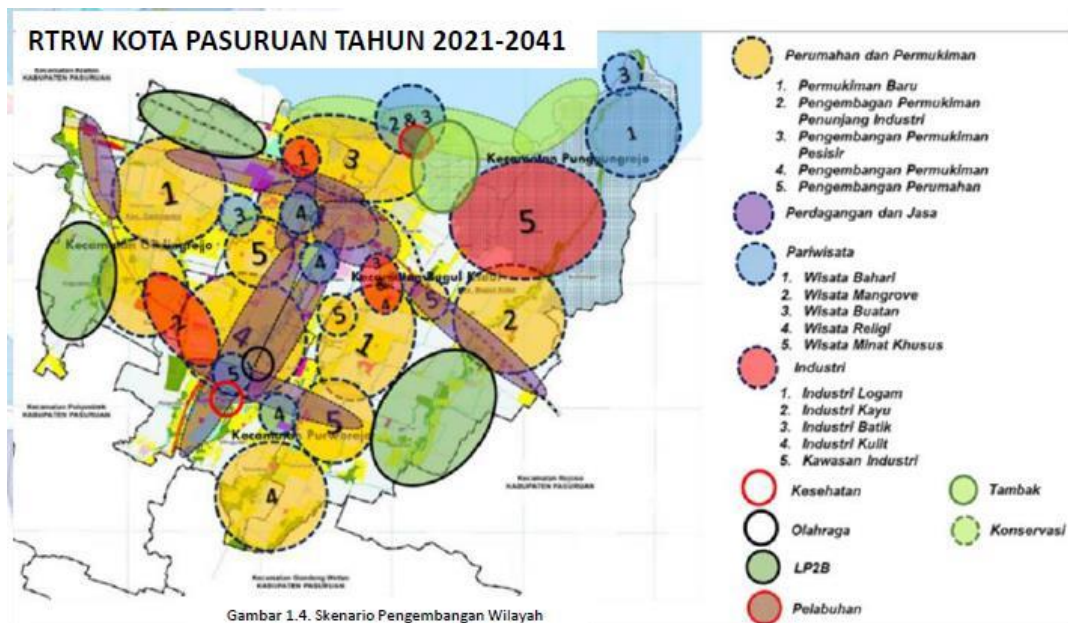
In 2023 it will be exactly 7 years since the establishment of the Great Disability House, with a total of 100 members based on different organizational backgrounds. Considering that Great Disability House is a social home that accommodates 4 organizations under its auspices, including the following:

- 1) Gerkatin (Gerakan Persatuan Tuli Indonesia). The gerkatin is Indonesian Deaf Unity Movement. The Gerkatin organization consists of people with speech impairments who are given skills in the form of managing a cafe or a type of coffee shop located at the Pasuruan City social service office.
- 2) Pertuni (Persatuan Tuna Netra Indonesia). Pertuni is The Pertuni organization consists of blind people with disabilities who are given skills in the form of massage, printing or helping to manage a cafe or a type of coffee shop.
- 3) DMI (Disable Motor Cycle Indonesia). The BMI organization consists of disabled persons with disabilities who receive assistance from the social services tosa motorbikes which are used to open cafe

- 4) NPCI (National Paralympic Committee Indonesia). The NPC organization consists of all persons with disabilities who are given skills in the form of training in sports to produce athletes with disabilities.

The merging of the four organizations into one unit, namely the Disability Great House, became the background for the formation of a structural organization. The management structure in carrying out and accommodating the roles and functions of each organization includes :

The establishment of the management is a form of effort in providing convenience in system regulation at Great Disability House, providing accountability and also direction in existing programs including providing job skills training to members. The program was provided by the Municipal Government of Pasuruan with the aim of facilitating persons with disabilities in exploring their abilities and talents. In addition, the government of Pasuruan City continues to support the innovation and creativity of persons with disabilities, especially in creating business products and supporting the birth of micro, small and medium enterprises. One form of MSE (Micro Small Enterprises) from disabled homes, namely food catering services, street cafes, printing, snack chips, to handmade products such as masks, t-shirts, shoes, etc.

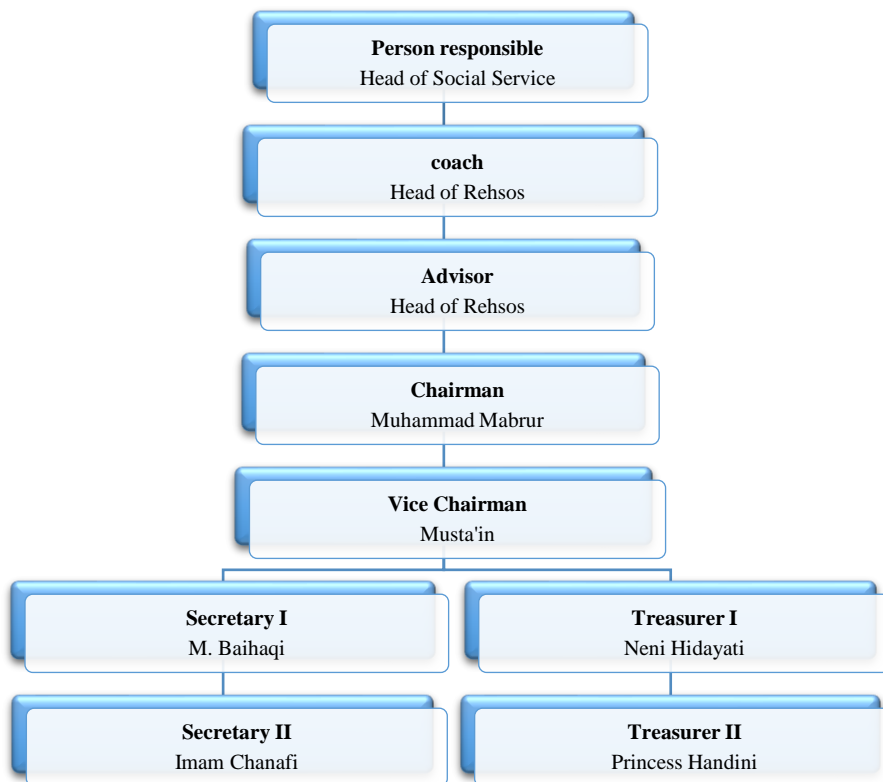


**Fig. 1. Pasuruan city regional development plan**

Source: Bappelitbangda Pasuruan City



**Fig. 2. Great disability house**  
Source: Bappelitbangda Kota Pasuruan



**Fig. 3. The management structure of each organization**

In marketing, of course each product has its own market. As with food catering services, most of the consumers come from the Pasuruan City Government itself. The average daily order for

catering services is 50 boxes to 300 boxes of rice depending on the number of orders. Maximum orders are usually obtained during big day celebrations and big activities. The price per

portion or per box varies, starting from IDR 12,000 depending on the menu order. Not only that, other processed food products are produced in the form of various snack chips such as banana chips, tempeh chips, breadfruit chips, and also rengginang. These snack products are packaged as attractively as possible so they are fit for sale and have high value in the market. With jar packaging and attractive standing, it can attract consumer interest so that consumers can choose according to their tastes and needs. For packaging using a jar for banana chips, breadfruit chips, and also rengginang, the price is IDR. 20,000,-/jar. As for for packaging standing on all product chips snacks produced, marketed at a price of IDR 10,000,-/piece.

Besides that, there are handmade products that are marketed either through direct selling through sales at the Social Service Hall and Small Micro Business exhibitions organized by the city government. In addition, various SME (Small Micro Business) product catalogs for Great Disability House can be accessed on several online sales platforms such as Shopee, Tokopedia, Lazada etc. Via the Griyo Melati website. Although the product ordering system is still through the city government as the main person in charge of Great Disability House.

### **3.5 Indicators of Sustainable Development for Great Disability House According to OJK (Authority Service Finance)**

#### **3.5.1 Ecologically sustainable**

Sustainable ecological is a prerequisite for development and survival because environment natural is core source must power guarded and preserved [16]. Besides Therefore, ecological sustainability guarantees the sustainability of ecosystems on earth. Various efforts must be made to ensure environmental sustainability as follows:

- 1) Maintaining the integrity of the environmental order to become a life support system on Earth, remaining safe and productive, adaptability and sustainable restoration of land, water, air and all life.
- 2) To maintain the integrity of the order, there are three aspects that must be considered by the environment, namely; Carrying capacity, assimilation capacity and sustainable use of recovered resources.

third, implementing actions that do not disturb the integrity of the living environment, avoiding character changes and changing ecosystems, reducing land conversion and processing them with quality books, having a high ecological level and the waste to be disposed of does not exceed its absorption capacity for the environment.

- 3) Diversity preservation determine the sustainability of ecological processes. A process that forms a service chain in humans now and in the future. There are three aspects of biodiversity, namely genetic diversity, species and environmental settings. Things must be done to change this biodiversity here in after referred to as "conservation of natural ecosystems and representative areas conservation of the characteristics of biological resources so that they do not change to preserve the area may be areas of ecosystems that have been transformed by diversity and the sustainability of biodiversity, conservative on agricultural overland migration".

Environmentally sound development management is one thing important for ecosystem sustainability. This can be done in the following way: pollution prevention; Ecosystem restoration and restoration and damaged natural resources; Increasing the productive capacity of natural ecosystems and human construction.

One of the ecological sustainability implemented by Great Disability House can be seen through the implementation of 3R namely Reduse, Reuse and Recycle through the creation of each product which always tries to turn unused waste into beautiful handicrafts and has resale value. The form of 3R implementation in Great Disability House can be seen through the products produced, including the following:

- 1) Reduce. In reducing the use of products that have the potential to become unused waste, Great Disability House creates business products in the form of handicrafts in the form of handmade bags that are not disposable and can be washed, so that they can be used for a long time. In addition, there are other handmade products in the form of cloth masks. Through the skills possessed, they are able to turn cloth waste into non-disposable cloth mask products, there by reducing the use of disposable masks



which have the potential to become unused waste.

- 2) Reuse. The use of products that are not disposable and can be used periodically is a step in reducing waste. By reusing, you can reduce waste that is no longer used. For example, a skill product created by Great Disability House is in the form of processed organic natural materials, such as wood and leaves, which are turned into crafts that can be used periodically, thus reducing waste.
- 3) Recycle. In an effort to maintain the integrity of the environmental order to keep it clean and healthy, human efforts are needed to reduce circulating waste. Not only is it enough to use products that can be used many times but also need initiatives to create recycled products from existing waste. So that it not only reduces but transforms existing waste into a product that is useful and can be reused.

One form of initiative from Great Disability House is to create products with sales value through recycling both organic and inorganic waste that is unused but still suitable for use. For example, handmade products made from processed organic waste in the form of wood and leaves which are turned into beautiful tissue box products, making decorative lamps from unused threads, and making cloth masks. In addition to processed products from organic waste, there are also processed products from inorganic waste, such as making tote bags or shopping bags made from plastic.

Through the application of 3R in creating value for a product, the integrity of the environmental order is maintained so that the goals of sustainable development in the field of ecology (environment) can be created.

### 3.5.2 Sustainable economy

Sustainable development no regardless from aspect economy especially in problem poverty. In Indonesia poverty become topic main in matter effort repair condition economy society. Government through various policy done For achievement objective specifically in effort alleviation poverty. So that expected through development sustainable capable become solution on problem the [2].

The continuation of the economy carried out by Great Disability House is by marketing their products through the web which is claimed to be

one of their forms of marketing in the digital era as it is today. Dramatically high sales can be supported by effective and efficient marketing through the web.

Apart from that, in the process of making a product or a type of food that is marketed, the Disability Great House not only uses the labor of its members, but Great Disability House is able to open up opportunities for housewives who do not have a job to join them. The proceeds from the sale will later be distributed to the workforce and the rest will be processed with the aim of bringing welfare to the members of Great Disability House.

### 3.5.3 Socio-cultural sustainability

Human development is oriented development on quality source power man where every man bio psychological always want the best of it raises demands to source fulfillment ever increasing need limited. Limitations the will resulted culture in the thought process to method fulfillment need the so that man will growing. Through development that will become forerunner will change as base development sustainable [17]. In general, social and cultural sustainability is embodied in social justice, human dignity and improving the quality of life for all people. Social and cultural sustainability has four objectives, namely:

- 1) Population stability whose achievement requires strong political commitment, community awareness and participation, as well as empowering women, improving quality, efficiency and family environment.
- 2) Fulfillment of basic human needs through poverty alleviation and absolute poverty reduction. Sustainable development is impossible to achieve when there are disparities in the distribution of wealth or social class. Obstacles to social sustainability must be removed by meeting the basic needs of society. Eliminated social class is possible to achieve equal educational opportunities, restoration of just land and empowerment of women.
- 3) Preservation of cultural diversity by recognizing and respecting the social and cultural systems of all peoples and by understanding and using traditional knowledge for the benefit of society and economic development.
- 4) We attract local people to participate in decision making. For social sustainability,

there are several Important requirements include: priority spending and social programs aimed at mutual benefit through investment in resource development, for example to improve the status of women, to ensure access to education and health, economic development through investment and technological change must be sustainable and according to the distribution of productive resources. Equitable and efficient division between regions, villages and cities should be avoided through local priorities and resource allocation decisions.

The socio-cultural continuation that is being carried out by the Great Disability House is by creating various goods or food products with various variants or flavors which will later be marketed through important events such as: Pasuruan City Anniversary, Pasuruan Kondhang Dance etc. In addition, the Handmade handicraft products marketed by the Great Disability House reflect the local culture of Pasuruan City such as souvenirs, T-shirts and masks with Madinah nuances, namely Forward Economy, Beautiful City, and Harmony of its citizens as the slogan of the vision of Pasuruan City. So that many of the products produced are typical Pasuruan souvenirs given by the Pasuruan City Government to government guests.

#### **3.5.4 Politics, defense and security sustainability**

Political continuity aims to respect human rights and freedom of individual and social participation in business, society and politics, a living democracy must pay attention to transparent and accountable democratic processes, safeguarding the availability of food, water and shelter [18].

The continuity of politics , defense and security that is carried out by Great Disability House is by creating various types of products or goods that do not oppose SARA (Ethnicity, Religion, Race and Inter-group) elements. Even though the product created is a typical Pasuruan souvenir, there is no element of a political campaign tool in it. In addition, all products produced by Great Disability House are products that are free from elements of plagiarism because the various products created, both food and crafts, are the original result of the creativity and innovation of members who come from training for persons with disabilities. So, the products that are produced are real from the thoughts of members

with disabilities starting from the material, the method of manufacture, the manufacturing model, etc.

#### **4. CONCLUSION**

Utilization of the environment while still paying attention to environmental sustainability so that it is maintained. The concept of sustainable development as a form of development strategy in providing limits to the use of natural ecosystems and the resources therein. Pasuruan City as one of the cities in East Java has a vision of realizing Pasuruan City as a city with an advanced economy, a beautiful city, and the harmony of its citizens (Madinah). All persons with disabilities in Pasuruan City to have the opportunity to take part in various skills training. Based on sustainable development indicators according to the Financial Services Authority, the role of Great Disability House in the sustainable development of Pasuruan City can be identified as follows:

- 1) ecologically sustainability, through the creation of value for money products through the recycling of both organic and inorganic waste that is unused but still fit for use such as masks, tissue boxes, tote bags
- 2) economic sustainability, namely through product marketing both directly and through online sales platforms where the output is able to prosper the members of Great Disability House
- 3) socio cultural sustainability, through Handmade craft products marketed by Great Disability House that reflect the local culture of Pasuruan City such as souvenirs, T-shirts and masks with Madinah nuances namely Advanced Economy, Beautiful City, and Harmony of its citizens as the slogan of the vision of Pasuruan City ;
- 4) politics, defense and security sustainability, through the creation of various types of products or goods that do not oppose elements of SARA (Ethnicity, Religion, Race, and Intergroup), elements of political campaign tools, and elements of plagiarism.

#### **5. IMPLICATION**

Sustainable development is development that meets the needs of life in the present without damaging or degrading the ability of future

generations. The results showed that Great Disability House as a social community based on micro enterprises was able to realize Pasuruan City in achieving sustainable development goals.

This implications so that in the future Pasuruan City and all cities in Indonesia will pay more attention to social communities such as Great Disability House to build their trust, expertise, and creativity, as well as productivity in the world of work as an effort to realize sustainable development.

### COMPETING INTERESTS

Authors have declared that no competing interests exist.

### REFERENCES

1. Tomislav K. The concept of sustainable development: From its beginning to the contemporary issues. *Zagreb International Review of Economics & Business*. 2018 May 31;21(1):67-94.
2. Hapsoro NA, Bangun K. The Development of Sustainable Development Seen From Economic Aspects in Indonesia. *Lakar: Journal of Architecture*, 3 (2file:///C:/Users/Sandiani Sri Wahyuni/Pictures/refrensi pkm susi.pdf). 2020;88. Available:https://doi.org/10.30998/lja.v3i2.7046
3. Tay DSR, Rusmiwari S. Implementation of sustainable development policy. *JISIP: Journal of Social and Political Sciences*. 2019;8 (4):217–222.
4. Armi A, Soeaidy S, Hayat A. Socio-economic impacts of market relocation policies (Case Study of Dinoyo Malang Market Relocation). *Jap*. 2016;4(10):1–6.
5. Jazuli A. Dynamics of environmental law and natural resources in the context of sustainable development. *Rechts Vinding Journal: National Law Development Media*. 2015;4(2):181. Available:https://doi.org/10.33331/rechtsvinding.v4i2.19
6. Iswanaji C, Nafi' Hasbi MZ, Salekhah F, Amin M. Implementation of the Analytical Networking Process (Anp) of zakat distribution on sustainable community economic development (Case Study of the Baznas Institute, Jember Regency, East Java). *Journal of Tabarru': Islamic Banking and Finance*. 2021;4 (1):195–208. Available:https://doi.org/10.25299/jtb.2021.vol4(1).6681
7. Suparmoko M. National and regional development. *Journal of Economics and Management*. 2020;9(1):39–50.
8. Setianingtias R, Baiquni M, Kurniawan A. Modeling indicators of sustainable development goals in Indonesia. *Journal of Development Economics*. 2019;27(2):61–74. Available:https://doi.org/10.14203/jep.27.2.2019.61-74
9. Setiadi R, Jawoto S, Sophianingrum M, Rosalia D. Semarang city sustainable development indicators. *Riptek*. 2008;2 (2):1–6.
10. Ramadhani RW, Prihantoro E. Development communication strategy for the government of bojonegoro regency in implementing nawacita and sustainable development goals. *Journal of Development Communication*. 2020;18 (02):117–129. Available:https://doi.org/10.46937/18202028913
11. Widiastuti A. Description of the area of Pasuruan City. *Journal of Chemical Information and Modeling*. 2017;53(9):67.
12. Wicaksana A, Rachman T. Musah, Gakpetor, & Poma, 2018, hal. 26). *Angewandte Chemie International Edition*. 2018;6(11):951–952. 3(1), 10–27. Available:https://medium.com/@arifwicaksana/pengertian-use-case-a7e576e1b6bf
13. Pasuruan DKK (nd). Pasuruan City vision and mission. H.
14. Bappelitbangda. (n.d.). Development Planning Meeting (Musrenbang) Regional Medium Term Development Plan (RPJMD) Pasuruan City. Bappelitbangda.Pasuruankota.Go.Id; 2021-2026.
15. Arsvendo D, Khotimah K, Fitrianto AR. Development of religious tourism as sustainable tourism in Pasuruan City. *Journal of Master of Tourism (JUMPA)*. 2018;9:97. Available:https://doi.org/10.24843/jumpa.2022.v09.i01.p05
16. Abdoellah, OS Human ecology and sustainable development; 2017. Available:https://books.google.co.id/books?id=FMxGDwAAQBAJ&lpg=PP1&ots=dYqvVygPU-&dq=ecologically sustainable development&lr&hl=en&pg=PR4#v=onepage&q=ecologically sustainable development&f=false

17. Susiana S. Editor: Sali susiana sustainable development (Sustainable Development). Individual Assignments Introduction to development (Sustainable Development). Individual Assignments Introduction to Philosophy of Science Odd Semester. of DPR RI and Azza graphic; 2015.
18. Jaya A. The concept of sustainable 2004;1–11.

---

© 2023 Wahyuni et al.; This is an Open Access article distributed under the terms of the Creative Commons Attribution License (<http://creativecommons.org/licenses/by/4.0>), which permits unrestricted use, distribution, and reproduction in any medium, provided the original work is properly cited.

*Peer-review history:*  
*The peer review history for this paper can be accessed here:*  
<https://www.sdiarticle5.com/review-history/107617>