



# Evaluation of Methanol Extract of *Napoleona imperialis* Seeds on Some Biochemical Indices, Fertility Status and Organs of Albino Rats

Sunday Haruna <sup>a\*</sup>, Parker Joshua <sup>a</sup>, Victor Ogugua <sup>a</sup>,  
Muhammad Khadijat <sup>b</sup> and Ejiogu Ikedi <sup>c</sup>

<sup>a</sup> Department of Biochemistry, University of Nigeria, Nsukka, Nigeria.

<sup>b</sup> Department of Biochemistry, Nasarawa State University, Keffi, Nigeria.

<sup>c</sup> Nnamdi Azikiwe University, Nnewi Campus, Nigeria.

## Authors' contributions

This work was carried out in collaboration among all authors. All authors read and approved the final manuscript.

## Article Information

### Open Peer Review History:

This journal follows the Advanced Open Peer Review policy. Identity of the Reviewers, Editor(s) and additional Reviewers, peer review comments, different versions of the manuscript, comments of the editors, etc are available here: <https://www.sdiarticle5.com/review-history/106810>

**Original Research Article**

**Received: 15/07/2023**

**Accepted: 21/09/2023**

**Published: 29/09/2023**

## ABSTRACT

The present study evaluated the *in vivo* toxic effect of methanol extract of *Napoleona imperialis* seeds on some biochemical indices and organs of albino rats. The phytochemical constituents as well as the acute toxicity test of the extract were evaluated using standard methods. Twenty five experimental rats were divided into five groups of five rats each, group 1 was the control while the experimental groups received the extract thus (group 2 = 100, group 3= 200, group 4= 400 and group 5 = 600mg/kg). They were administered the extract orally for 28 days, on the 29<sup>th</sup> day after an overnight fast, blood was collected and organs harvested after sacrificing the animals. The biochemical parameters; malondialdehyde (MDA), glutathione peroxidase (GPx), superoxide dismutase (SOD),reduced glutathione (GSH) and catalase (CAT) activities were analyzed, caudal

\*Corresponding author: E-mail: [sundaygambo5@gmail.com](mailto:sundaygambo5@gmail.com), [sundayharuna@nsuk.edu.ng](mailto:sundayharuna@nsuk.edu.ng);

epididymal and testicular sperm cells were counted, histological examination of the testis, liver and kidney was also performed. The results showed that methanol extract of the seeds contain phenols, flavonoids, carotenoids, carbohydrates, saponins, alkaloids, hydrogen cyanide, phytates, tannins and oxalates. LD<sub>50</sub> was not calculated since no death of rat was recorded in both phases. The extract increased MDA concentration and CAT activity at 600 mg/kg with no significant ( $p > 0.05$ ) changes in the activities of GPx, GSH and SOD of the experimental groups compared to the control. The extract reduced caudal epididymal and testicular sperm counts non-significantly ( $p > 0.05$ ). Photomicrograph images of the liver, kidney and testis showed no histological changes. These results demonstrate that the seed extract may not be toxic to the vital organs at the doses administered although mild elevations were observed in catalase and little reduction of sperm counts. The extract may induce lipid peroxidation due to significantly increased concentration of MDA.

**Keywords:** Albino rats; *napoleona imperialis*; anti-oxidant enzymes; phytochemistry; toxicity; vital organs.

## 1. INTRODUCTION

Evaluation of toxicity levels is generally important in screening of natural products with nutritional, pharmacological and medicinal potentials. Toxicity is defined as a science that defines the limits of safety of chemical agents for human and animal populations [1]. Toxicity tests for bioactive compounds are mostly used to examine specific adverse biological events or specific end points such as cancer, cardio toxicity, and skin/eye irritation. Toxicity testing also helps calculate the No Observed Adverse Effect Level (NOAEL) dose and is helpful for clinical trials [1]. Toxicity can be measured by effects on the target such as the organism, organ, tissue or cell. Because individuals have different levels of response to the same dose of a toxin, a population-level measure of toxicity is often used which relates the probabilities of an outcome for a given individual in a population [2].

The plant, *N. imperialis* belongs to the family *Lecythidaceae* which is a small tropical family that grows in all the regions of Nigeria and other parts of West Africa [3]. The plant is commonly known as ntum in the Ikwano dialect of Ibo language in Nigeria. It is a wild plant with potentials as an alternative livestock feed source [4]. In the rural communities, the trunks and branches serve for firewood. The leaves are cut and fed to livestock as forage or used as green manure while the epicarp (flesh) and seeds are discarded after the pulp is eaten by humans. Studies [5] have confirmed the presence of anti-nutritional factors in raw *N. imperialis* seeds and the resulting negative performance of animals fed these seeds. There is therefore need to evaluate the extent of toxicity caused by ingesting seed of *N. imperialis* on organs such as

heart, liver, kidneys and testes. This study therefore aimed to evaluate the toxicological effects of methanol extract of *N. imperialis* seeds on some biochemical parameters and organs of albino rats.

## 2. MATERIALS AND METHODS

### 2.1 Materials

#### 2.1.1 Plant material

Fresh fruits of *N. imperialis* were harvested from a habitat in Aku, Igbo-Etiti Local Government Area of Enugu State, Nigeria. The plant materials were identified and authenticated at Bioresources and Development Centre, University of Nigeria, Nsukka. A specimen was deposited at the herbarium of the Department for reference purposes.

#### 2.1.2 Animals

The animals used for this work were adult wistar albino rats. They were obtained from the Animal House of the Faculty of Veterinary Medicine, University of Nigeria, Nsukka. They were acclimatized for seven days under standard environmental conditions and were maintained on a regular feed and clean water.

#### 2.1.3 Preparation of the plant extract

Seeds of the ripe and mature fruit were removed from the pods and washed with clean water. The seeds were air-dried at room temperature and decoated. The dried and decoated seeds were pulverized into coarse powder. The pulverized powder (1 kg) was soaked in 2.5 litre of methanol

for 72 hours at room temperature with occasional stirring. The suspension was filtered using a mesh followed by Whatman No. 4 filter paper and concentrated using water bath at 40°C. The extract was refrigerated till further use. Percentage yield was calculated as follows;

$$\text{Percentage yield (\%)} = \frac{\text{weight of extract}}{\text{weight of pulverized sample}} \times 100$$

#### 2.1.4 Qualitative phytochemical analyses of the extracts

The preliminary phytochemical screening of the methanol extract of *N. imperialis* seeds was carried out according to the methods of [7,8,9].

#### 2.1.5 Acute toxicity test

The median lethal dose (LD<sub>50</sub>) was determined using Lorke's method [6]. This method has two phases which are phases 1 and 2 respectively. In phase 1, nine rats were used in this phase. The nine animals were divided into three groups of three animals each. Each group of animals was administered different doses (10, 100 and 1000 mg/kg) of the extract orally. The rats were placed under observation for 24 hours to check for any behavior changes or mortality. In phase 2, three rats were used, they were distributed into three groups of one rat each. The rats were administered higher doses (1900, 2600 and 5000 mg/kg) of the extract and then observed for 24 hours for behavior changes as well as mortality.

#### 2.1.6 Experimental design

A total of twenty five male albino rats (age) were divided into five groups of five rats each and treated as follows;

Group 1: Normal control (1 ml/kg of distilled water)

Group 2: 100 mg/kg of methanol extract of *N. imperialis* seeds

Group 3: 200 mg/kg of methanol extract of *N. imperialis* seeds

Group 4: 400 mg/kg of methanol extract of *N. imperialis* seeds

Group 5: 600 mg/kg of methanol extract of *N. imperialis* seeds

The rats were administered the extract orally for 28 days. On day 29, after an overnight fast, blood samples were collected from ocular vein for haematological and biochemical analyses after which the rats were humanely sacrificed by

suffocation with mild chloroform and the liver, kidney and testis harvested for histopathology. One of the testis and the epididymis were further crushed to release sperm cells for sperm count

#### 2.1.7 Determination of biochemical parameters

Malondialdehyde (MDA) concentration was measured spectrophotometrically [10]. Glutathione peroxidase (GPx) activity was assayed spectrophotometrically according to the method of [11]. Superoxide dismutase, (SOD), Catalase activities, Glutathione (GSH) concentration were assayed spectrophotometrically according to the method of International Federation of Clinical and Applied Chemistry [12-14] as outlined in the RANDOX kits. The testicular and caudal epididymal sperm reserves were determined using the standard hemocytometric method [15].

#### 2.1.8 Histological examination

This was carried out as described by Bancroft and Stevens [16].

**Procedure:** At the end of the experiment the liver, kidney and testicles from group 1 and 5 were collected for histopathology. The organs were fixed in 10% formal saline and dehydrated in ascending grades of (70%, 90% and 100%) ethanol respectively. Thereafter, the tissues were cleared in chloroform overnight, infiltrated and embedded in molten paraffin wax. The blocks were later trimmed and sectioned at 5 – 6 microns. The sections were de-paraffinized in xylene, taken to water and subsequently stained with Haematoxylin and Eosin (H and E) for light microscopy.

#### 2.1.9 Statistical analysis

The data obtained were analyzed using one-way analysis of variance with the help of a software known as IBM statistical product and service solution (SPSS) package, version 20.0 and the results were expressed as mean ± standard deviation followed by LSD and Duncan test for level of significance. The acceptance value of significance was  $p < 0.05$  for all the results.

### 3. RESULTS

#### 3.1 Percentage Yield of the Extract

The percentage yield of the extract was 5.4%.

### 3.2 Qualitative and Quantitative Phytochemical Analysis

The qualitative phytochemical composition of *N. imperialis* seed extract showed the presence of hydrogen cyanide in high amount. Phenols, flavonoids, carotenoids, carbohydrates and alkaloids in low amounts while saponins was present in moderate amount.

Quantitatively, the amount of phenols was found to be  $0.81 \pm 0.11$  g/100g, flavonoids, ( $0.79 \pm 0.20$ ) carotenoids, ( $1.25 \pm 0.47$ ), carbohydrates, ( $0.99 \pm 0.18$ ) and alkaloids, ( $0.56 \pm 0.10$ )g/100g (Table 1).

### 3.3 Median Lethal Dose (LD<sub>50</sub>) of Methanol Extract of *Napoleonaimperialis* Seeds

As shown in Table 2, no mortality was observed in the mice treated with different doses of the extract in both phase one and phase two. Hence LD<sub>50</sub> was not calculated.

### 3.4 Effect of Methanol Extract of *N. imperialis* Seed Extract on Malondialdehyde and Antioxidant Parameters of Rats

Table 3 shows non-significant ( $p > 0.05$ ) difference of MDA in the test groups (2- 4) compared to the control except group 5 rats that were administered the highest dose of 600mg/kg b.w extract which was significantly ( $p < 0.05$ ) higher compared to group 1.

GPx activity was observed to decrease non-significantly ( $p > 0.05$ ) in groups 2-4 compared to the control and increased non-significantly ( $p > 0.05$ ) in group 5 compared to the control.

There was non-significant ( $p > 0.05$ ) increase of SOD in all the test groups compared to the control as shown in Table 3. A non-significant ( $P > 0.05$ ) increase of catalase activity was observed in all the treated groups compared to the control except group 5 rats that were administered 600mg/kg b.w extract where the value was found to be significantly ( $p < 0.05$ ) higher compared to the control, as shown in Table 3. From Table 3, GSH could also be seen to decrease non-significantly ( $p > 0.05$ ) in group 2 and 3 and increased non-significantly ( $p > 0.05$ ) from group 4 down to group 5 compared to the control.

### 3.5 Effect of Methanol Extract of *N. imperialis* Seeds on Caudal Epidydermal and testicular Sperm Counts

Caudal epidydermal sperm count in all the test groups compared to the control showed non-significant ( $p > 0.05$ ) decrease as shown in Table 4.

A non-significant ( $p > 0.05$ ) decrease of testicular sperm count in the treated groups compared to the control was also observed from groups 2, 3 and 4 and increased non-significantly ( $p > 0.05$ ) in group 5 rats that were administered 600 mg/kg b.w.

### 3.6 Photomicrographs of Methanol Extract of *Napoleonaimperialis* Seeds on some Metabolic Organs Liver, Kidney and Testis of Rats

#### 3.6.1 Effect of methanol extract of *N. imperialis* seeds on Liver of Rats

As shown in the plates below, photomicrograph images of both the liver, kidney and testis of rats appear normal, with no physical damage to them.

Plates 1 a and1 b: Photomicrograph of the liver from the experimental groups of rats untreated (U) and treated (T) with 600 mg/kg seed extract of *N. imperialis* showing apparently normal plates of hepatocytes (arrows) separated by sinusoids and radiating away from the central vein (V). H and E x 400

#### 3.6.2 Effect of methanol extract of *N. imperialis* seeds on kidney of rats

Plates 2 a and2 b: Photomicrograph of the kidney from the experimental groups of rats untreated (U) and treated (T) with 600 mg/kg seed extract of *N. imperialis* showing the glomerulus (GL) and renal tubules (arrows) with no remarkable histologic change. H and E x 400.

#### 3.6.3 Effect of methanol extract of *N. imperialis* seeds on testis of rats

Plates 3a and 3b: Photomicrograph of the testis from the experimental groups of rats untreated (U) and treated (T) with 600 mg/kg seed extract of *N. imperialis* showing apparently normal seminiferous tubules (ST) separated by inter tubular connective tissue septa (white arrows). H and E x 400.

**Table 1. Qualitative and quantitative phytochemical composition of methanol extract *Napoleonaimperialis* seed extract**

Phytochemicals	Qualitative composition	Quantitative Composition (g/100mg)
Phenols	+	0.81±0.11
Flavonoids	+	0.79±0.20
Carotenoids	+	1.25±0.47
Carbohydrates	+	0.99±0.18
Saponins	++	1.99±0.64
Alkaloids	+	0.56±0.10
HCN (mg/kg)	+++	18.74±3.57
Phytates	+	1.56 ±0.31
Tannins	+	1.35±0.61
Oxalates	+	0.85±0.19

Results are expressed in mean ± SD (n = 3)

Key: + Present in low amount ; ++ Present in moderate amount ; +++ Present in high amount

**Table 2. Acute toxicity studies of methanol extract *N. imperialis* seed extract**

Phase 1		
S/NO.	Dose (mg/kg)	Mortality
1	10	0/3
2	100	0/3
3	1000	0/3
Phase 2		
S/NO.	Dose (mg/kg b.w)	Mortality
1	1900	0/1
2	2600	0/1
3	5000	0/1

**Table 3. Effect of methanol extract of *N. imperialis* seeds on the pro- and antioxidant parameters of Rats**

Treatment Group	MDA and Anti-oxidant Indices				
	MDA Conc. (mg/dl)	GPx Activity (IU/L)	SOD Activity (IU/L)	Catalase (IU/L)	GSH Conc. (mg/dl)
Group 1	3.60±1.54 <sup>a</sup>	22.90±3.55 <sup>c</sup>	11.61±1.59 <sup>d</sup>	3.32±1.71 <sup>e</sup>	3.38±1.43 <sup>g</sup>
Group 2	5.74±1.14 <sup>a</sup>	20.91±3.28 <sup>c</sup>	12.38±2.17 <sup>d</sup>	3.77±2.17 <sup>e</sup>	1.44±.49 <sup>g</sup>
Group 3	3.68±2.08 <sup>a</sup>	21.94±2.4 <sup>c</sup>	12.34±2.21 <sup>d</sup>	4.23±1.58 <sup>e</sup>	3.33±2.33 <sup>g</sup>
Group 4	5.03±2.14 <sup>a</sup>	21.41±1.94 <sup>c</sup>	12.95±2.25 <sup>d</sup>	3.60±1.28 <sup>e</sup>	4.43±2.43 <sup>g</sup>
Group 5	9.94±2.58 <sup>b</sup>	23.31±4.05 <sup>c</sup>	13.32±5.29 <sup>d</sup>	7.95±4.00 <sup>f</sup>	5.18±3.67 <sup>g</sup>

Results are expressed in Means ± SD (n = 5)

Mean values with different letters as superscripts down the column are considered significant at p < 0.05

Group 1 = Normal Control

Group 2 = 100 mg/kg b.w. of methanol extract of *Napoleona imperialis* seeds

Group 3 = 200 mg/kg b.w. of methanol extract of *Napoleona imperialis* seeds

Group 4 = 400 mg/kg b.w. of methanol extract of *Napoleona imperialis* seeds

Group 5 = 600 mg/kg b.w. of methanol extract of *Napoleona imperialis* seeds

#### 4. DISCUSSION

The presence of the following phytochemicals; phenols, flavonoids, carotenoids, carbohydrates, saponins, alkaloids, hydrogen cyanide, phytates, tannins and oxalates in the seed extract corresponds with previous research findings by [17] and [18]. The 18.74 mg/kg HCN values found in raw *Napoleonaimperialis*

seed was found to be much lower than those found in cowpea seeds (40 mg/kg) and was beyond the upper limit of 10 mg/kg HCN reported to be safe for human consumption [19,20]. The moderate amount of saponin content of the seed extract corresponded with [21] who stated that *N. imperialis* seed could be considered as a good source of haemolytic saponins.

**Table 4. Effect of methanol extract of *N. imperialis* seeds on sperm counts of rats**

Treatment Group	Sperm Count	
	Caudal Epidermal ( $10^6/ml$ )	Testicular ( $10^6/ml$ )
Group 1	107.66±5.37 <sup>a</sup>	42.00±6.00 <sup>b</sup>
Group 2	103.20±4.41 <sup>a</sup>	41.26±2.47 <sup>b</sup>
Group 3	102.60±2.49 <sup>a</sup>	42.80±1.38 <sup>b</sup>
Group 4	95.00±1.39 <sup>a</sup>	40.62±2.81 <sup>b</sup>
Group 5	101.88±7.68 <sup>a</sup>	44.46±2.57 <sup>b</sup>

Results are expressed in Means ± SD (n = 5)

Mean values with different letters as superscripts across the column are considered significant at  $p < 0.05$

Group 1 = Normal Control

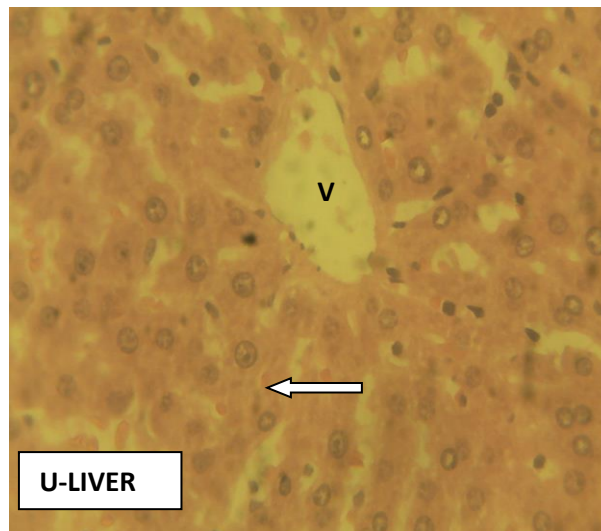
Group 2 = 100 mg/kg b.w. of methanol extract of *Napoleonaimperialis* seeds

Group 3 = 200 mg/kg b.w. of methanol extract of *Napoleonaimperialis* seeds

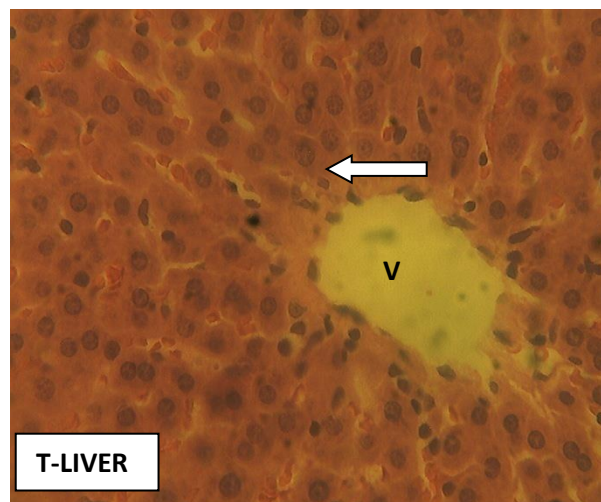
Group 4 = 400 mg/kg b.w. of methanol extract of *Napoleonaimperialis* seeds

Group 5 = 600 mg/kg b.w. of methanol extract of *Napoleonaimperialis* seeds

**Photomicrographs of Methanol Extract of *Napoleona imperialis* Seeds on liver, kidney and testis of rats**



**Plate 1a. Untreated liver (control)**



**Plate 1b. Treated liver with 600mg/kg b.w**

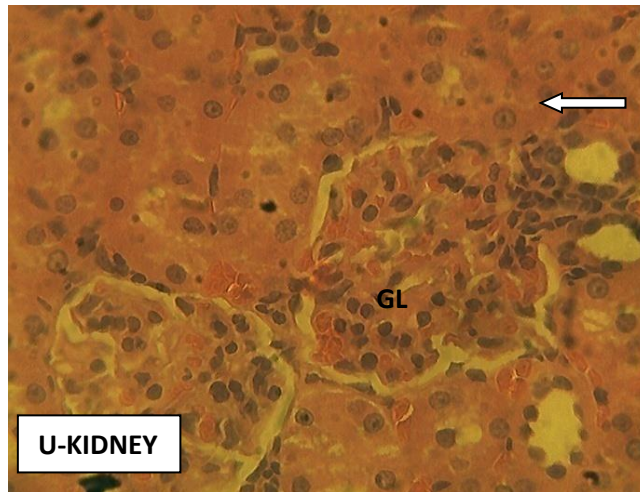


Plate 2a. Untreated kidney (control)

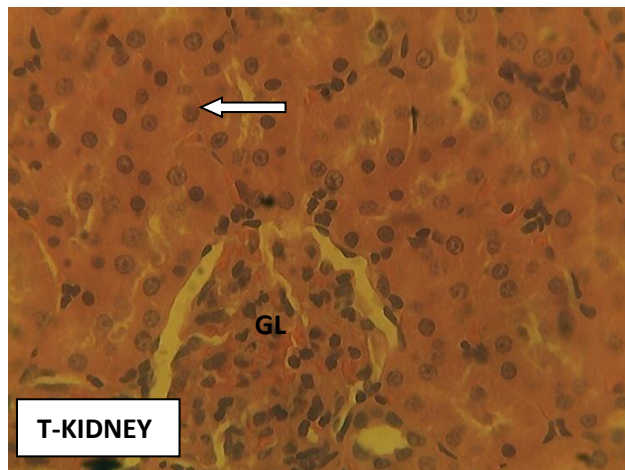
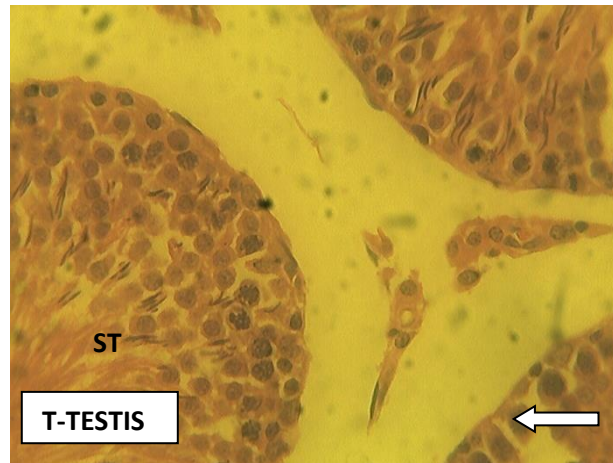


Plate 2b. Treated kidney with 600mg/kg b.w



Plate 3a. Untreated testis (control)



**Plate 3b. Treated testis with 600mg/kg b.w**

Oxalates and phytates have been reported to inhibit some mineral absorption in the body (Auwalet *et al.*, 2012) thereby making them unavailable for the body's utilization. This is an indication that the seed extract might not be safe for humans and animal consumption up to that dose, (5000 mg/kg b.w).

There was a significant increase in the concentration of MDA of the rats group administered 600 mg/kg b.w of the extract ( $9.94 \pm 2.58$ ) but the increase was non-significant in the other groups compared to the control ( $3.60 \pm 1.54$ ). Malondialdehyde (MDA) is the end product of lipid peroxidation and measures free radical generation. This result indicates that the seed extract might induce lipid peroxidation at high doses.

Antioxidant enzymes (made in the body) and antioxidant nutrients (found in foods) can scavenge and deactivate the free radicals turning them into harmless particles [22]. Improving antioxidant status is a way of fighting degenerative diseases.

Glutathione peroxidase (GPx) is an enzyme that is responsible for protecting cells from damage due to free radicals like hydrogen and lipid peroxides. The result showed no significant difference in the values of GPx of the rats in the treated groups compared to that of the control group (group 1). This may be due to the fact that the administered doses of the seed extract did not stimulate the production of GPx to detoxify hydrogen and lipid peroxides at the administered doses. It may also be that the administered doses probably inhibited the activities of GPx.

There was no significant difference in the levels of SOD across the treated groups compared to control. This may be due to the fact that the administered doses of the seed extract did not stimulate the production of SOD to detoxify superoxide radical. It may also be that the administered doses probably inhibited the activities of SOD.

SOD is the only enzyme which employs the superoxide anion as a substrate and produces hydrogen peroxide as a metabolite, this is more toxic than superoxide radical and has to be disposed by Catalase.

Catalase activity was a significantly ( $p < 0.05$ ) higher in group 5 rats administered 600 mg/kg b.w ( $7.95 \pm 4.0$ ) compared to the control group ( $3.32 \pm 1.7$ ). This shows that the methanol seed extract of *N. imperialis* may scavenge the hydrogen peroxide generated by SOD.

Glutathione (GSH) is a tripeptide found in most cells and reacts with free radicals to protect cells against hydroxyl radicals, singlet oxygen and superoxide radicals [23]. Its levels decreased non-significantly in group 2 compared to the control and increased non-significantly from groups 3 to 5 compared to the control. This shows the likelihood of the seed extract to increase organ competence in detoxifying xenobiotics, as GSH is a major detoxifier in many organs such as the liver. This shows that the seed extract possesses antioxidant properties that help to stabilize the integrity of cell membranes and also prevent organ-challenged mediated free radicals.



Caudal epididymal sperm count in all the test groups compared to the control showed non-significant ( $p > 0.05$ ) decrease. A non-significant ( $p > 0.05$ ) decrease of testicular sperm count in the treated groups compared to the control was also observed from groups 2, 3 and 4 and increased non-significantly ( $p > 0.05$ ) in group 5 rats that were administered 600 mg/kg b.w. This indicates that the bioactive substances in the extract did not exert a negative effect on the spermatozoa of the rats.

Photomicrograph image of the liver from the experimental groups of rats untreated and treated with 600 mg/kg seed extract of *N. imperialis* showed apparently normal plates of hepatocytes indicating no serious damage on the liver tissues at the administered dose.

Photomicrograph images of the kidney from the experimental groups of rats untreated and treated with 600 mg/kg seed extract of *N. imperialis* showed normal glomerulus and renal tubules with no remarkable histological change. This indicates that the extract did not pose serious physical damage to the kidneys.

Photomicrograph images of the testis from the experimental groups of rats untreated and treated with 600 mg/kg seed extract of *N. imperialis* showing apparently normal seminiferous tubules separated by

## 5. CONCLUSION

The results demonstrate that the seed extract may not be toxic to the vital organs at the doses administered although mild elevations were observed in catalase and little reduction of sperm counts. The extract may induce lipid peroxidation due to significantly increased concentration of MDA. The free radicals arising due to ingestion of the seeds may be curtailed by the body's antioxidant scavenging mechanism like GSH. photomicrograph images showed that the seeds extract had no significant damages on the liver, kidney and testis of the rats.

## CONSENT AND ETHICAL APPROVAL

It is not applicable.

## COMPETING INTERESTS

Authors have declared that no competing interests exist.

## REFERENCES

1. Casarett LJ, Klaassen CD, Doull J, Doull T. Toxicology: The Basic Science of Toxicology, 7th Edn. McGraw-Hill Professional, New York. 1996;3-8.
2. Mark ES. Toxicology for non-toxicologist. Government Institute, a division of ABS Group Inc. Rock Ville, Maryland. 1999;44-46.
3. Dalziel JM. Year the useful of medicinal plants of West Africa: Crown agent for overseas government and administration. London: Crown Agents for the Colonies; 224-230.
4. Ukpabi UH, Ukpabi UJ. Potential of seeds of *Napoleona imperialis* (*p. beauv*) as a source of haemolyticsaponin and feed ingredients, Livestock Research for Rural Development. 2003;15 (12):1-9.
5. Uchegbu MC, Okoli IC, Anyanwu CE, Etuk EB, Esonu, BO and Udedibie IB, Performance, carcass and organ characteristics of finisher broilers fed graded levels of raw *Napoleona imperialis* seed meal, Livestock Research for Rural Development. 2002;16(6): 1-5.
6. Lorke D. Determination of acute toxicity, Archives Toxicity. 1983;53:275-279.
7. Harbone JB, Phytochemical Methods. Chapman and Hall limited, London. 1973;49-88.
8. Trease GE, Evans WC. Pharmacognosy. 13th ed. Bailliere Tindall Books Publishers. By Cas Sell and Collines Macmillan Publishers., Ltd. London. 1989;1-105.
9. Sofowara AO. Medicinal Plants and Traditional Medicine in Africa. University of Ife Press 2nd Edn. 1993;320.
10. Wallin B, Rosengren B, Shertzer HG, Camejo G. Lipoprotein oxidation and measurement of TBARS formation in single microlitre plate; It's use for evaluation of antioxidants, Analytical Biochemistry. 1993;208:10-15.
11. Ursini F, Mariorino M, Brigelius-Flohé R, Aumann KD, Roveri A, Schomburg D, Flohé L. Diversity of glutathione peroxidase, Methods in Enzymology. 1995;252:38-53.
12. International Federation of Clinical and Applied Chemistry IFCC. primary reference procedure for the measurement of catalytic activity concentrations of enzymes at 37°C, Journal of Clinical Chemistry Laboratory. 2002;40(60):643-648.

13. Aebi HE Catalase, In "Method of Enzymatic Analysis", VCH, Weinheim, Germany-Deerfield FL. 1983;3:273-286.
14. Jollow DJ, Michell JR, Zampaglionic and Gillete JR, Bromobenzene-induced Liver necrosis: Protective role of glutathione and evidence for 3,4-Bromobenzene oxide as hepatotoxic metabolite, Pharmacology. 1974;11:151-169.
15. Amann RP, Almquist JO. Reproductive capacity of dairy bulls. 1. Techniques for direct measurement of gonadal and extra-gonadal sperm reserves, Journal of Dairy science. 1961;44:1537-1545.
16. Bancroft JD, Stevens M. Theory and Practice of Histological Techniques. Churchill Livingstone, Edinburgh. 2002; 16-64.
17. Auwal SM, Atiku MK, Wudil AM, Sule MS. Phytochemical composition and acute toxicity evaluation of aqueous root back extract of *Securidacalogipedunculata* (LINN), Bayero Journal of Pure and Applied Sciences. 2012;5(2):67-72.
18. Oke DB, Fetuga BL, Tewe OO. Effect of autoclaving on the anti-nutritional factors of cowpea varieties, Nigerian Journal of Animal Production. 1996;23:33-38.
19. Makkar HPS and Becker K. Nutrient and antinutrient factors in different morphological parts of *Oleiferetree*. Journal of Agricultural Science, Cambridge. 1997;128:311-322.
20. Chu Y, Sun J, Wu X, Liu RH. Antioxidant and antiproliferative activity of common vegetables. Journal of Agricultural Food Chemistry. 2002;50:6910-6916.
21. Schulz JB, Linderau J, Dichgans J. Glutathione, oxidative stress and neurodegeneration. European. Journal of Biochemistry. 2000;276:4904-4911.
22. Levine M, Ramsey SC, Daruwara R. Criteria and recommendation for Vitamin C intake. JAMA. 1991;281: 1415-23.
23. Hasanuzzaman M, Nahar K, Anee TI, Fujita M. Glutathione in plants: biosynthesis and physiological role in environmental stress tolerance. Physiology and Molecular Biology of Plants. 2017 Apr;23:249-68.

© 2023 Haruna et al.; This is an Open Access article distributed under the terms of the Creative Commons Attribution License (<http://creativecommons.org/licenses/by/4.0>), which permits unrestricted use, distribution, and reproduction in any medium, provided the original work is properly cited.

Peer-review history:

The peer review history for this paper can be accessed here:  
<https://www.sdiarticle5.com/review-history/106810>