

Design, Characterization and Geospatial Analysis of Physical and Socio-economic Indicators of Anthropogenic Pressures on Protected Areas in Africa

Elysée Ntiranyibagira^{1,2*}, Francois Xavier Naramabuye³,
Thacienne Uwilingiyimana³, Fabien Muhirwa², Andrew Kibogo³,
Gloriose Umuziranenge², Isaac Kayumba³ and Concorde Nsengumuremyi⁴

¹Centre of Environmental Research, Training and Expertise for Development in Africa (CERTEDA), Kigali, Rwanda.

²Department of Natural Resources and Environment Management, Protestant University of Rwanda, Rwanda.

³College of Agriculture, Animal Sciences and Veterinary Medicine, University of Rwanda, Rwanda.

⁴DFRM-Rwanda Polytechnics, Kitabi College, Rwanda.

Authors' contributions

This work was carried out in collaboration among all authors. Authors EN, FXN and TU designed the study, performed the statistical analysis, wrote the protocol, and wrote the first draft of the manuscript.

Authors EN, FM, AK and GU managed the analyses of the study. Authors EN, GU, IK and CN managed the literature searches. All authors read and approved the final manuscript.

Article Information

DOI: 10.9734/IJECC/2019/v9i130096

Received 18 January 2019

Accepted 03 April 2019

Published 18 April 2019

Method Article

ABSTRACT

In Africa, the important agro-pastoral activity and poverty in rural areas lead to strong anthropogenic pressures on protected areas and to their quick degradation. Therefore the efficient conservation and sustainable exploitation of protected areas require adaptive and dynamic management that integrates peripheral interactions with regard to their changing spatial and temporal dimensions. They call for the deployment of appropriate management indicators capable of translating all the issues raised into concrete and practical terms. To this end, a new conceptual and analytical approach to assess pressure indicators is needed to take into account the spatio-temporal oscillation or mobility of the area of socio-economic dependence that must henceforth provide the basis for sustainable management in the context of adaptation to climate change. The study responds to this concern through rigorous conceptualization, characterization and validation

*Corresponding author: E-mail: ebagira2010@yahoo.fr;

of original peripheral pressure indicators focused on a global and dynamic socio-economic framework. The method used consisted of an interpretative analysis of theoretical bibliographic data, measurements and field observations using GPS, ArcGIS 10.1 and Envi 4.5 and semi-structured interviews for the characterization of defined pressure indicators and their field validation. The five pressure indicators designed and applied on the basis of the criteria of direct dependence on protected areas are the *coefficient of asymmetry (K_c)*, the *periphery (Ψ)*, the *dependent population ($D\pi$)*, the *distance-access time (DAT)* and the *field daily working time (FDWT)*. The approach and pressure indicators were successfully applied to the Rusizi National Park (Burundi) for the period 1984-2015. The results showed that the park has a coefficient of asymmetry of 2.64 which represents a three times higher level than its circular equivalent, a periphery of 13.23 km radius composed of 35 localities characterized by distance-access times comprise between 0 to 2 h 30 and field daily working times ranging from 7 to 11 hours. They revealed that nearly 70% of peripheral populations are concentrated within 6 km from the boundaries and have distance-access times of less than one hour. The peripheral dependence on Rusizi Park reaches 100% for woody resources, 97% for livestock products, 88% for agricultural resources and 83% for animal protein products. The modeling of potential pressures and field observations showed that peripheral localities are the more threatening that they are more dependent, more populated and closer to the park. As a consequence, the important anthropogenic pressures led to a very significant degradation of the park during the study period.

Keywords: Protected area; anthropogenic pressure; pressure indicator; periphery; geospatial analysis.

1. INTRODUCTION

As a key for biodiversity conservation strategies and safeguarding of socio-cultural values [1-4], protected areas have multiple interests according to the categories of actors [5-8] and face severe exploitation pressures, particularly in the tropics [9]. These pressures are as more worrying as the climate change has already affected 89% of the world's natural systems [10-12,3]. They are also annoying because the world system of protected areas provides one of the most effective solutions for mitigation and population adaptation [3]. For effective conservation of degraded or threatened ecosystems and sustainable exploitation of natural resources, protected areas have to be managed in an adaptive and dynamic way [13,11]. Such requires priority for research and reliable data on the management and evaluation of protected areas [1,3]. This should be the case for African countries where several factors lead to overexploitation of natural resources, quick degradation of protected areas and deforestation [14,15,3]. Specifically, participatory management approaches are designed to address the central problem of natural resource exploitation at or around the periphery of protected areas [8,16]. Indeed, protected areas and their peripheries have multiple and complex interactions [17,15,18,8, 19] that generate a dynamic spatialization of social relationships [20-21] and inevitably lead to think of conservation as a gradient of situations

ranging from strict protection areas to surrounding agricultural areas [22]. The omnipresence of social issues around protected areas [23] makes it necessary to analyze the impact of peripheral socio-economic interactions on the dynamics of protected areas by considering a wide spatial and temporal scale [17]. These observations resolutely pose the problem of the definition and delimitation of the "periphery" or the "socio-economic extent zone" of a protected area as a central parameter that makes it possible to draw objectively the spatio-temporal framework of the socio-economic interactions between "Protected Areas" and their "Dependent Zones" which determine the exploitation and evolution of the protected resources. The real periphery is therefore more extended than the classical and static buffer zone of 500 to 1000 m which is theoretically destined to absorb peripheral conflicts to secure central protection zones [24-25]. The design, the characterization and the spatial analysis of physical and socio-economic pressure indicators are based on the key and various criteria considered for the creation, the management and the evaluation of protected areas [26-28,19]. Up to now, no thorough research has been conducted to conceptualize and determine the periphery of protected areas and associated indicators in a rigorous manner in their socio-economic and spatial realities. The study is specifically designed to analyze the management of African protected areas in a perspective that

places them within a wide spatial and socio-economic framework for land planning.

2. METHODS

The methodology used consisted of three stages, that are namely: (1) interpretative synthesis of bibliographic theoretical data and specialized scientific articles, (2) conceptualization and characterization of physical and socio-economic pressure indicators and (3) Remote Sensing data and field measurements, observations and interviews for the probatory or the validation test. Required data for biophysical and socio-economic characterization of the periphery of the tested protected area were collected using: (1) semi-directive individual interview guides, (2) semi-structured interview guides in focus groups, (3) Landsat 5 MSS-TM image related to year 1984 and 8 LDCM OLI-TIRS image related to year 2015 both covering Path and Row 173-062 area, (4) GPS site surveys, (5) guided field observations and (6) random observations of product traces in the sites.

2.1 Theoretical Arguments and Analysis

Among the biophysical criteria used for creating protected areas and that represent in some way the ecological value of ecosystems; there are the size and shape that determine exposure and vulnerability to human threats [29,27]. Ideally, shapes that maximize concentration and minimize the length of boundaries are preferable to others. However, the great majority of African protected areas have been established mainly or exclusively on the basis of their tourist interest by targeting strategic hunting areas and endemic species [30-31,6,2]. They rarely meet this standard and are largely exposed to peripheral pressures which are often justified and aggravated by: (1) the socio-economic interest of these areas that often coincide with wetlands and have the most suitable lands for crops and pastures [24], (2) the exception or the African rule of "protected areas without inhabitants" and the predominance of protected areas of management categories I to IV which often result in land dispossession and population expulsion [32-34], (3) the strongly restrictive conditions for population integration [35] and the low impact of ecotourism on the population economy [36-37], (4) the new global sorting and selective conservation strategies that lead to a relegation of the population socio-economic interests [38,6, 39-41] and (5) the historical contentious related

to the creation or extension of protected areas and the destruction of crops, properties and people by wild animals [24,2,15]. As a result of these conservation policies and practices, the peripheries of protected areas where expelled local populations are concentrated become areas of open population hostility and rebellion [24,6,2] from which regular forays are conducted for farm lands, pastures, wild animals, food and wood resources as African protected areas have become "food pantries surrounded by hunger" [42]. As buffer zones established to satisfy peripheral socio-economic interests are most of the time recovered for the extension of protected areas, the periphery is each time pushed back and the populations doubly sequestered forced to put more pressures on protected areas because of a lack of credible socio-economic alternatives. This is easy to understand since it is known that the African internalization and ownership of international policies of participatory management are at odds with the conditionalities of external financing that are increasingly "closed" to protected areas that are more and more "open" to local communities. This is the real dilemma of the conservation in many African countries. Thus, the efficient and sustainable management of African protected areas requires a rigorous redefinition and deployment of appropriate management, monitoring and evaluation indicators that can translate all the issues raised into concrete and practical terms. Traditionally based on participatory and adaptive management plans [43-46] and regular evaluations of the management effectiveness [47,26,48], it must now be extended beyond the physical limits of protected areas by integrating new pressure indicators that underpin sustainable management in the context of climate change that leads to a spatio-temporal dilatation of the periphery or the area of socio-economic dependence. This theoretical conception of protected areas with spatio-temporal mobility is openly opposed to the imposition of precise geographical limits [49] which does not take into account the fluidity of the zones of extension and peripheral influence for socio-economic purposes. Contrary, it is supported by other authors who consider that one of the best methods of global studies of protected areas for the evaluation of the effectiveness management is the study of the changes undergone by natural vegetation inside and outside of their boundaries [3]. In this perspective, the traditional management plans must from now on cover both the protected area and its socio-economic periphery, whose spatio-

temporal oscillation has to be integrated into the management and evaluation schemes. The protected area's management and assessment model that we considered for the definition, characterization and geospatial analysis of the pressure indicators that we have designed is DPSIR [50]. In this model, the pressures of interest for our study are related to the quantification and the distribution of populations, agricultural activities and infrastructure in and around protected areas [51].

2.2 Design and Characterization of Pressure Indicators

In the study, new concepts and pressure indicators are defined, characterized and applied for the assessment of protected area's pressures with regard to their periphery and conservation objectives. With reference to the definition and nature of environmental indicators that are intended to demonstrate the evolution of specific attributes of a protected area with respect to the conservation objectives [26,52], the pressure indicators used are all physical and socio-economic by nature.

2.2.1 Coefficient of asymmetry of a protected area (K_c)

The coefficient of asymmetry is a physical indicator defined as "the ratio between the perimeter of a protected area and the circumference of a circular protected area that would have the same area". The definition of this indicator is based on the theoretical approach of the ideal shape of protected areas which should maximize concentration and minimize the length of boundaries [29]. The more the coefficient of asymmetry of a protected area is close to one (1), the more its shape is picked up and approaches a circle and vice versa. Elongated and irregular shapes increase the exposure of protected areas to peripheral threats and constitute the first indicator of vulnerability, particularly in rural, poor and populated environments that are characterized by low densities of preventive and dissuasive surveillance. In the analysis of potential pressures on protected areas, the coefficient of asymmetry completes the protected area accessibility map model, which theoretically quantifies potential pressures by dependent population in relation to the barriers or facilities of protected areas access by considering the topography and land use [53]. In the vulnerability matrix, high values are attributed to obstacles

(rivers, mountains, hills) and low values to easy crossing areas (savannahs, grasslands).

2.2.2 Periphery of a protected area (Ψ)

The periphery of a protected area is a hybrid concept that is at the same time spatial, socio-economic and temporal. It is defined as "the space-time of mobility of the socio-economic dependence of populations and localities on the natural resources of a protected area". Intuitively and practically speaking, it is a spatially and temporally oscillatory space whose thickness or horizon depends on the socio-economic and climatic constraints and opportunities that can be internal or external to the protected area. This dynamic conception of the area of peripheral influence is obviously more appropriate than the classic and static term "shoreline" from which derives the adjective "riparian" often attributed to the neighboring populations that are economically depending on protected areas for their life.

2.2.3 Dependent populations (D_π)

The spatial and temporal concept of periphery is indissolubly linked to the concept of "peripheral or dependent populations" of a protected area. The study defines "dependent populations" as "all inhabitants who depend totally or partially on one or more natural resources of a protected area, by direct access or through intermediaries, at any time of the year". This means that the concept has four fundamental dimensions, namely: (1) a spatial dimension that determines the thickness of the geographic area of dependence or the periphery, (2) a socio-economic dimension that corresponds to the type of dependence, (3) a governance dimension based on the direct or indirect mode of access to natural resources and (4) a temporal dimension that indicates the annual period and the duration of dependence on the protected area.

2.2.4 Distance-Access Time (DAT)

To the concept of periphery of a protected area, the study adds the concept of "Distance-Access Time" which translates both, for a given locality and a given peripheral community, "a distance to the protected area" and "a time associated pathway" that is necessary for local populations to reach the protected area and exploit its resources, along the shortest route; by assuming the absence of any physical and administrative constraint. The "Distance-Access Time", expressed in "walking hours" in the African

context, completes the anthropogenic and agricultural pressure indicators used to characterize and classify a country's protected areas [51]. The weakness of these indicators lies on the spatial and temporal references which consider a uniform buffer or a fixed periphery of 30 km and a travel time of 3 hours, without taking into account possible heterogeneities existing within this geographical space.

2.2.5 Field Daily Working Time (FDWT)

The concept of "Field Daily Working Time" is a spatialized socio-economic concept that is fundamentally related to the concepts of "Periphery" and "Distance-Access Time". For a population and a predominantly agricultural locality located at a given DAT that is engaged in illegally agro-pastoral activities in a protected area, the "Field Daily Working Time" is defined as "the maximum daily working time calculated on the basis of a daily time of 12 hours divided between field work and walking journeys from and back home, by considering one hour for 6 km. The more a locality has a significant DAT, the lower its FDWT is and the less it will be threatening the protected area and vice versa.

2.3 Methods for the Determination of Pressure Indicators

2.3.1 Coefficient of asymmetry of a protected area

The coefficient of asymmetry of a protected area is determined by the formula $K_c = 0.28P_a / (\sqrt{S_a})$ where P_a and S_a respectively designate its perimeter (km) and its area (km²). The formula is obtained by expressing the perimeter of the protected area P_a as a function of the radius of the equivalent circle R_c which is calculated by the relation $R_c = \sqrt{S_a} / \pi$ (1) where S_a represents the common surface of the protected area and of the equivalent circle. By combining the relation (1) with the formula of the coefficient of asymmetry by definition, $K_c = P_a/P_c$ (2) where P_c is the circumference of the equivalent circle, the computation process arrived at the proposed formula, knowing that $P_c = 2\pi R_c$ (3). The area S_a and the perimeter P_a of a given protected area are determined using any mapping software like ArcGIS or QGIS from their shapefile.

2.3.2 Periphery of a protected area

The delimitation and characterization of the periphery is based on spatial analysis of socio-economic activities and demography. They are

related to: (1) the spatial location and distribution of peripheral villages and trade markets directly dependent on a protected area, (2) the identification and characterization of the main socio-economic activities of peripheral villages depending on a protected area, (3) the qualitative identification and characterization of the natural resources taken by peripheral villages and (4) the spatial distribution and evolution of the peripheral population depending on the natural resources of a protected area. The location of peripheral villages and trade markets is carried out through systematic pathways directed by territorial administration officers and protected area's managers on the basis of the criteria of socio-economic direct dependence. The geographical coordinates of various sites are registered with a GPS and used for mapping after their projection in the WGS 1984 system, and appropriated UTM Zone with any mapping software. The characterization of socio-economic activities of peripheral villages and the dependence on natural resources is carried out on the basis of technical and management reports, direct observations and individual and focus group semi-directive interviews with administrative officers, protected areas' managers and concerned populations as well. Through the analysis of fraudulent or illegal activities made possible by management reports and field observations (nature of seizures and penalties, geographical origins of offenders), natural resources needs and extractions are easily identified and described. Peripheral populations at different periods are determined by extrapolating data from general countries population censuses in specified years and from entities' administrative censuses.

2.3.3 Modeling of threats and potential peripheral pressures

The modeling of threats and peripheral pressures or the theoretical assessment of threats and potential pressures of peripheral dependent localities on a protected area is based on the prevailing socio-economic status, the Distance-Access Time, the Field Daily Working Time and the dependent population. For identical demographics, a locality will be more threatening than another on the protected area that it is closer to it. For identical distances or the same distance, a locality will be more threatening than another that it is more populated. According to our model, localities will be the more threatening for a protected area that they are more dependent, more populated and closer.

2.3.4 Distance-access time (DAT)

For a given peripheral locality, the distance X is measured in km with the measurement tool of any mapping software like ArcGIS or QGIS, from the distribution map of peripheral localities. The measured distance is then converted into corresponding Access Time (AT), by delimitating concentric geographical areas offset by 30 minutes of walking for 3 km distance.

2.3.5 Field daily working time (FDWT)

For each geographical sector thus delimited and each peripheral locality, the FDWT is calculated using the formula: $Y = 12 - 2(X/6) \Leftrightarrow Y = 12 - X/3$ where Y is the FDWT expressed in hours and X the distance of the locality to the protected area in km. In the application of the formula, the duration of 2 ways trip $X/3$ is rounded up to the nearest unit or half-unit.

2.4 Method for the Determination of Global Landscape Dynamics

For a given protected area, the synthetic landscape dynamics resulting from observed anthropogenic pressures between two reference dates are determined by means of the processing of satellite images like Landsat and Spot images and related cartographic analysis using appropriate Remote Sensing and GIS softwares. The kind of satellite images to be used for field validation depends on their availability, spatial resolution and cost reference made to the study period, the desired accuracy for a specific study and the available budget. For the validation test of the approach, Landsat open access and free of charge images related to years 1984 and 2015 were used. For the processing of images and cartographic analysis, Envi 4.5 and ArcGIS 10.1 softwares were used.

2.5 Application to the Rusizi National Park (Burundi)

2.5.1 Coefficient of asymmetry K_c

The area and perimeter of the Rusizi Park determined by ArcGIS 10.1 software being 106.73 km² and 97.68 km, the radius and circumference of the equivalent circle determined by calculation are respectively 5.83 km and 36.61 km. The coefficient of asymmetry K_c corresponding to these values is 2.64; which

represents a remarkably high level of asymmetry as shown in Fig. 1. In practice this means that the total length of the park's borders is almost 3 times greater than it would be if it were circular in shape. In other words, the highly asymmetrical nature of the protected area provides peripheral dependent populations a level of exposure to the fraudulent intrusion of 3 times higher; anything else remaining equal.

2.5.2 Periphery and socio-economic indicators

The Burundian periphery of the Rusizi National Park is made up of 35 dependent localities which are between 0 and 13.23 km far from the borders. These distances correspond to Access Times of 0 to 2h30 for a normal foot walk (Fig. 1). All the localities are characterized by a high rural and agropastoral activity. The proportion of peripheral localities that are involved in agriculture and livestock, agriculture, livestock and fishing and small business represent respectively 73%, 9%, 6% and 12% (Fig. 2). Like many African protected areas, we note that most of peripheral localities are involved in agropastoral activities. Indeed, 88% of them are depending on agriculture and livestock.

The dependence of peripheral localities on the protected area reaches 100% for woody resources, 97% for livestock products, 88% for agricultural resources and 83% for animal protein products as shown in Fig. 3. All of these communities have markets for the purchase and sale of various wood and non-wood forest products taken from the protected area; 69% of them being fraudulent and 31% authorized by managers. The population socio-economic dependence to the park for these natural resources is extended to the whole year even if it is increased during the dry season that is taking place from May to October.

The peripheral dependent populations of the protected area increased from 30 190 inhabitants in 1980 to 146 799 inhabitants in 2015. This represents respectively 58% and 76% of the total population of the surrounding districts.

2.5.3 Levels of peripheral threats and pressures

In terms of spatial distribution, the cartographic analysis showed that the proportion of peripheral dependent localities located at distances of up to

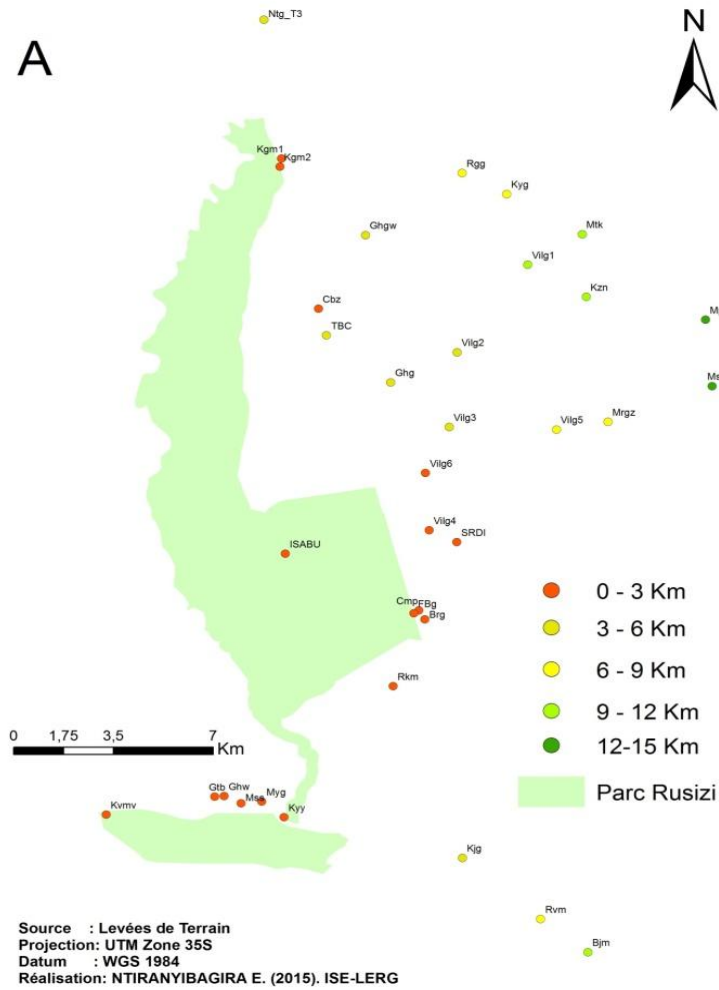


Fig. 1. Spatial distribution of Burundian peripheral villages

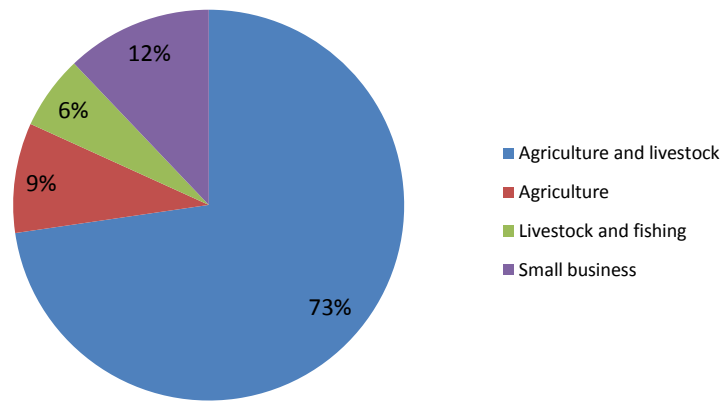


Fig. 2. Socio-economic characteristics of peripheral villages

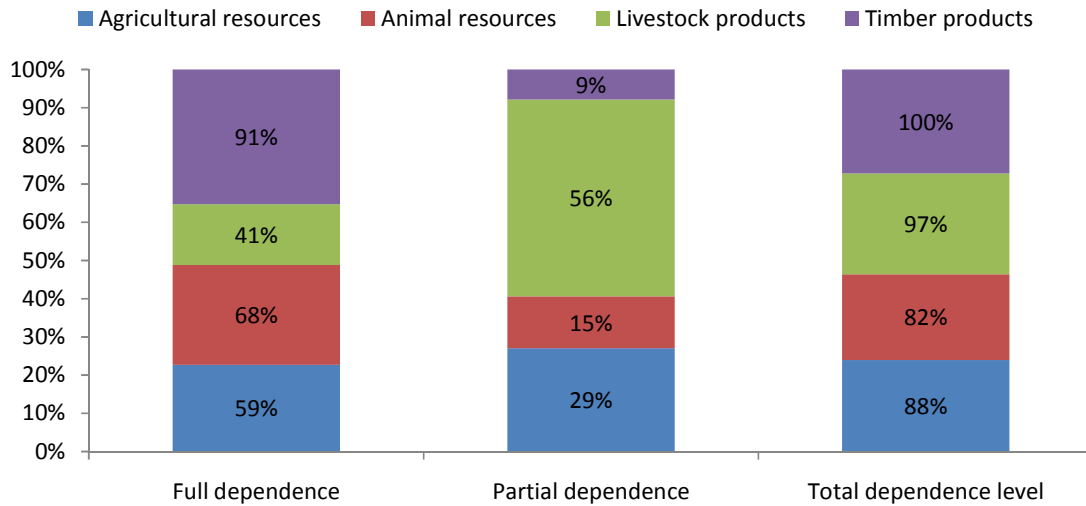


Fig. 3. Type and levels of socio-economic dependence to the park

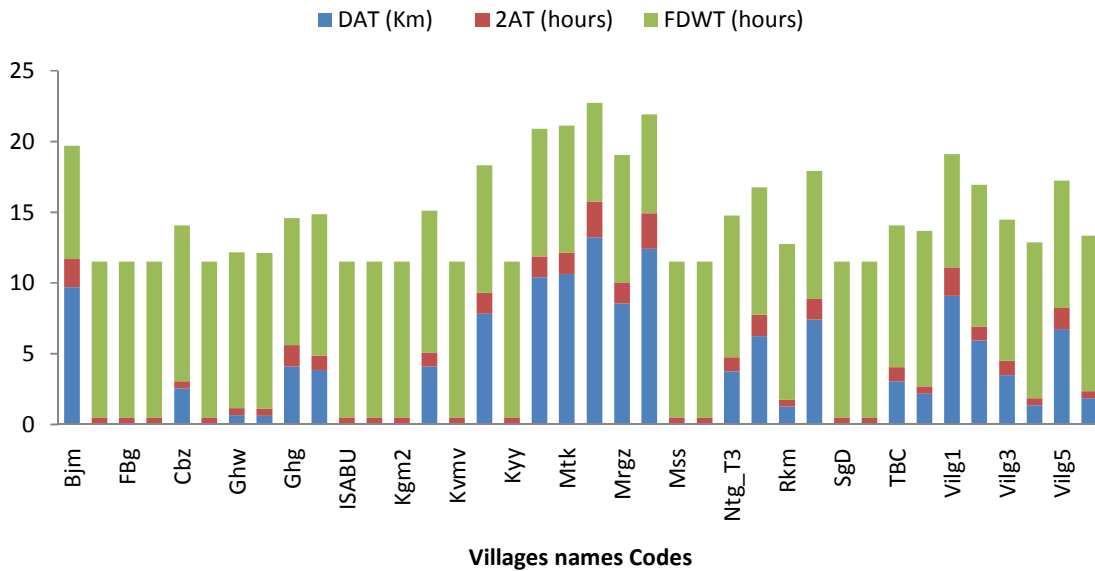


Fig. 4. Values of key indicators of potential threats and harms

3 km, 6 km, 9 km, 12 km and 15 km from the borders represent respectively 48.6%; 68.6%; 82.9%; 94.3% and 100% of the total. With regard to the Access Time of peripheral populations to the protected area, these distances correspond respectively to 30 mn, 1h, and 1h 30, 2h and 2h 30 travel or walking times, as shown in Fig. 1. In other words, 70% of the peripheral dependent populations take a maximum of one hour to reach the park and extract its natural resources.

The Fig. 4 shows that the FDWT related to different localities are characterized by Distances - Access Time (DAT) and Travelling Time (2AT) that oscillates between 7h for localities located far from the park like Mpanda and Musenyi and 11h for nearby localities like Gatumba, Buringa, Rukaramu, Village 4 and Kagwema. The results of field observations and interviews showed that the peripheral localities that put the greatest pressure on the protected area are concentrated in the northern part of the park,

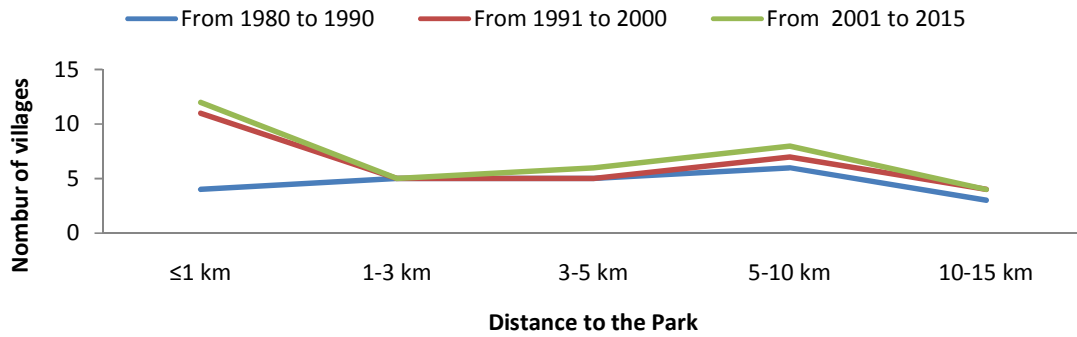


Fig. 5. Spatial and temporal evolution of peripheral villages

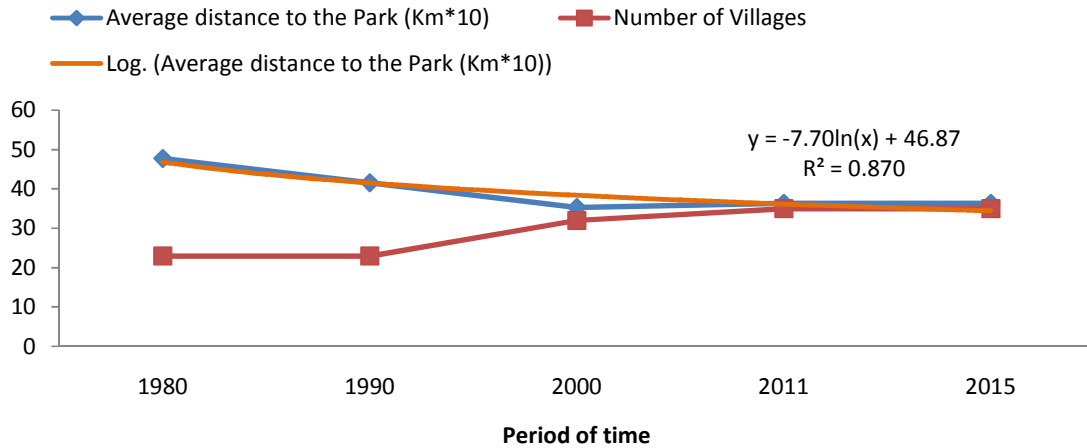


Fig. 6. Comparative evolution of number and distance of peripheral villages

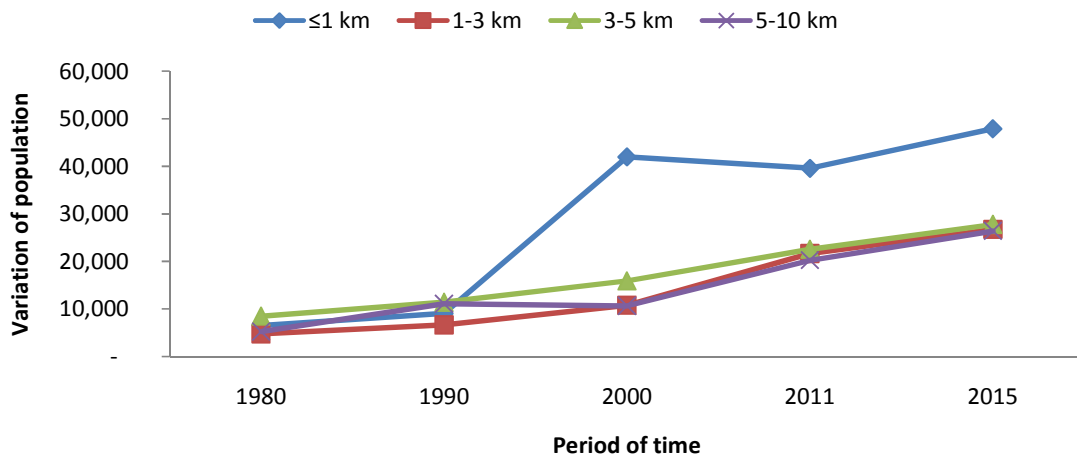


Fig. 7. Spatial and temporal evolution of peripheral populations

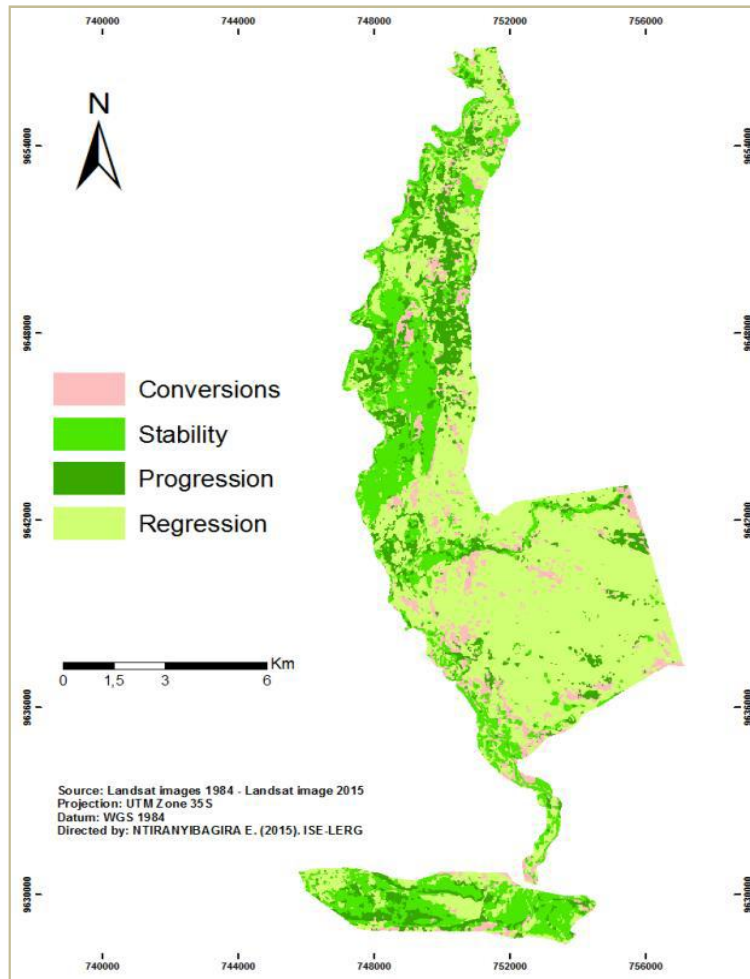


Fig. 8. Aggregated land cover dynamics between 1984 and 2015

within 1 km from the borders. These are mainly Rukaramu, Buringa, villages 1 to 6, Cabiza, Kagwema 1 and Kagwema 2. These localities are characterized by DAT of 0 to 9 km, a 2AT of 3 hours maximum and FDWT ranging from 8h to 11h. As a strategy to face long distance and high Access Times, people living in localities with high DAT are often used to contract with population living in localities that are close to the park for illegal farming activities against payment, especially in the rainy season.

2.5.4 Strategies of spatial occupancy at the periphery (Ψ)

In terms of spatial strategies, the analysis of the localities distribution between 1980 and 2015 showed that new localities have concentrated near the park (Fig. 5). The majority of the new localities were created between 1990 and 2000.

They were established between 0 and 3 km on one hand and between 5 and 10 km, on the other hand, focusing particularly at less than 1 km from the limits of the protected area (Fig. 5).

The increase in the number of localities was accompanied by a decrease in their average distance to the park (Fig. 6). The average distance to the park evolves according to a logarithmic linear regression model with $y = -7.704 \ln x + 46.876$ and a coefficient of correlation $R^2 = 0.87$. In fact, the number of peripheral dependent localities increased from 23 up to 35 between 1984 and 2015. Contrary, their average distance to the park decreased from 4.78 km to 3.64 km during the same period. The new villages created between 1990 and 2011 (2015) are increasingly concentrated near the Park (Fig. 6). This dynamic constitutes a double indirect pressure, numerical and spatial,

which is accentuated with another pressure, this one direct; that is to say the demographic pressure.

The Fig. 7 shows that the spatial distribution and densification of dependent populations follows the temporal and spatial densification of peripheral localities. The peripheral populations are concentrated between 0 and 3 km on one hand and between 3 and 5 km on the other hand, with a particularly strong concentration within 1 km from the park. The peripheral population growth was much marked during the periods 1990-2000 and 2011-2015 (Fig. 7). The demographic evolution has been steadily increasing between 1 and 5 km radius. That is to say between 1 and 3 km on one hand and between 3 and 5 km on the other hand. The proportion of the peripheral dependent populations on the park increased from 58% in 1980 to 76% in 2015.

2.5.5 Global landscape dynamics between 1984 and 2015

As a result of the important peripheral socio-economic interactions and threats, the Rusizi national Park experienced a very quick and advanced degradation between 1984 and 2015. The regression in vegetation cover, the progression in vegetation cover, the non vegetation involving conversions and the overall stability are respectively representing 55%, 14%, 23% and 8% of the park's total area (Fig. 8). The study noted that as a result of increased socio-economic interactions and anthropogenic pressures, the park undergone a very important degradation that affected more than 50% of the protected area during the study period.

3. CONCLUSION

In the African context, the study showed that protected areas are under severe anthropogenic pressures and rapid degradation due to several factors with combined effects. The objective of the study was to design, characterize and validate a number of physical and socio-economic pressure indicators on protected areas that are likely to best reflect and integrate spatial issues, temporal and socio-economic posed by the oscillatory nature of the periphery conceived and defined as the zone of spatio-temporal influence or socio-economic dependence. In the context of rural poverty and community adaptation to climate change marked by the spatial, temporal and socio-economic dilation of

the zone of dependence, a precise knowledge of these indicators is essential for protected areas' adaptive, dynamic and sustainable management. Thanks to an appropriate methodological approach combining theoretical aspects, field data and validation test to the Rusizi national Park, the study led to interesting results, particularly with regard to the characterization and practical operationalization of the complex concept of periphery that extends well beyond the classical and static buffer zone that is often recovered by protected areas managers and subtracted from socio-economic uses. It showed that due to an important coefficient of asymmetry, a large periphery and a lot of highly socio-economic dependent localities and populations which are concentrated inside and near the Rusizi Park, this one experienced a quick and significant degradation between 1984 and 2015. The study also made it possible to highlight the interest of an integrated analysis of protected areas management that places them in an encompassing and dynamic spatial and socio-economic framework. In this sense, the results obtained will enable decision-makers and African protected areas' managers to have new tools for sustainable management and planning, in the context of climate stress and increased anthropogenic pressures.

COMPETING INTERESTS

Authors have declared that no competing interests exist.

REFERENCES

1. Eva HD, Brink AB, Simonetti D. Monitoring land cover dynamics in Sub-Saharan Africa. A pilot study using Earth observing satellite data from 1975 and 2000. JRC Scientific and Technical Reports. 2006;40.
2. Triplet P. Handbook of management of protected areas in Francophone Africa, 2009;1250.
3. Dudley N, Stolton S, Belokurov A, et al. Natural solutions: Protected areas helping people cope with climate change. Gland (Switzerland), Washington DC and New York (USA): IUCN-WCPA, TNC, UNDP, WCS, The World Bank, WWF. 2010;130.
4. Théberge D, Côté S, Hébert M, Boulfroy E, Blanchet P, Lessard G. Exploring concepts related to protected areas including different forms of human use in the Capitale-Nationale. SHFQ and CERFO. 2012;86.

5. Hardin G. The tragedy of commons. In Hardin G (1969). Population, evolution and birth control, a collage of controversial ideas. San Francisco, Freeman and Company. 1969;367-380.
6. Colchester M. Wild nature, nature saved? Indigenous peoples, protected areas and biodiversity conservation. Global Movement for Tropical Forests (WRM) and World Wide Fund for Nature (WWF). 2003;154.
7. Giraut F, Guyot S, Houssay-Holzschuch M. Protected areas in African territorial recompositions. Geographic information, Armand Colin. 2004;340-368.
8. Kaboré A. Bush of some, protected area of others. History of settlement, perceptions of nature and politics of protected areas in the Burkinabe Gourma: The example of the Pama Partial Wildlife Reserve. Doctoral thesis. Institute of Advanced International Studies (Geneva) and Development for the degree of Doctor in Development Studies. 2010;397.
9. WWF/AfDB. Report on the ecological footprint of Africa. 2012;72. Available:www.protectedplanet.net (Accessed on 21/12/2016)
10. McCarty JP. Ecological consequences of recent climate change. Conservation Biology. 2001;15:320-331.
11. Hopkins JJ, Allison HM, Walmsley CA, et al. Conserving biodiversity in a changing climate: Guidance on building capacity to adapt. Department of Environment, Food and Rural Affairs, London. 2007;32.
12. IPCC. Climate change 2007: Impacts, adaptation and vulnerability. Contribution to the Working Group II to the Fourth Assessment Report of the Inter governmental Panel on Climate Change, Parry ML, Canziani OF, Palutikof JP, van der Linden PJ, Hanson CE, Eds., Cambridge University Press, Cambridge, UK. 2007;976.
13. Welch D. What should the protected area managers do in the face of climate change? The George Wright Forum. 2005;22:75-93.
14. Williams M. Dark ages and dark areas: Global deforestation in the deep past. Journal of Historical Geography. 2000;26: 28-46.
15. Binot A. Nature conservation in central Africa. Between Theories and Practices. Protected Areas with Variable Geometry. PhD Thesis, University Paris 1 Panthéon-Sorbonne. 2010;444.
16. Mahamadou SM, Boureima A. Indicators for measuring anthropogenic pressure on natural resources: Example of the periphery of "W" Park in the rural district of Tamou in Niger. Vertigo-the Electronic Journal in Environmental Sciences. 2015;14(1). Available:http://vertigo.revues.org/14754 seen on the 15/2/2015
17. Landry V. Natural resource management: Challenges and new approaches. In the Panoptique. 2009;1:5. Available:http://www.lepanoptique.com/sections:sciences,
18. De Fries RK, Krithi K, Pareeth S. Interactions between protected areas and their surroundings in human-dominated tropical landscapes; Biological Conservation. 2010;143(12):2870-2880.
19. Veyret Y. Dictionary of the environment, Paris. Armand Colin. 2012;403.
20. Aubertin C, Rodary E. Protected areas, sustainable spaces? IRD. 2008;276.
21. Glon E, Hinnewinkel C. Protecting nature, is it protecting society? Geography and Cultures. 2009;69:3-10.
22. Lepart J, Pascal M. Out of protected areas to preserve biodiversity. Geography and Cultures. 2009;69:11-24.
23. Dumoulin DK, Rodary E. NGOs at the center of the global biodiversity conservation sector. In Aubertin C. (ed.): Represent nature? NGOs and biodiversity, Paris, IRD Editions. 2005;59-98.
24. Mengue-Medou C. Protected areas in Africa: Prospects for their conservation. Vertigo. The Electronic Journal in Environmental Sciences. 2002;3(1):19. Available:http://vertigo.revues.org/index4126.html
25. IUCN-PACO. Actors and governance of protected areas in West Africa: What contribution to conservation? Ouagadougou, BF: IUCN / PACO. 2012; 171.
26. Hockings M, Stolton S, Leverington F, et al. Evaluating effectiveness: A framework for assessing management effectiveness of protected areas. Second Edition. # 14. IUCN, Gland, Switzerland. 2006;xiv:105.
27. Lockwood M, Worboys LG, Kothari A. Managing protected areas: A global guide. London Earthscan, IUCN. 2006;xxx:802.
28. Naro-Maciél E, Sterling EJ, Madhu R. Protected areas and biodiversity

- conservation I: Development and reserve creation. Document synthesis. Center for Biodiversity and Conservation (American Museum of Natural History), National Science Foundation or United States Fish and Wildlife Service. 2007;49.
29. Chape S, Blyth S, Fish L, Fox P, Spalding M. (compilers). United Nations list of protected areas. IUCN, Gland, Switzerland and Cambridge, UK and UNEP-WCMC, Cambridge, UK. 2003;ix:44.
 30. Huxley J. The conservation of wildlife and natural habitats in Central and East Africa, UNESCO, Paris. 1961;131.
 31. Myers R, Mittermeier RA, Mittermeier CG, Da Fonseca GAB, Kent J. Biodiversity hotspots for conservation priorities. *Nature*. 2000;403:853-858.
 32. Hannah L. African people, African parks: An evaluation of development initiatives. USAID, Washington, D.C. 1992;76.
 33. Neumann RP. Imposing wilderness: The battle of Africa, Los Angeles and Berkeley: University of California Press. 1998;268.
 34. Rossi G. Ecological interference. Environment and rural development from North to South. CNRS Editions Coll. Spaces and Environments, Paris. 2000;248.
 35. IUCN, UNEP and WWF. World conservation strategy. Conservation of living resources for sustainable development, Gland, IUCN. 1980;64.
 36. Rodary E. Natural areas: Development through participation? Networking and territorialization of wildlife conservation policies in Zambia and Zimbabwe. PhD thesis, University of Orleans, France. 2001;531.
 37. Rodary E, Castellanet C, Rossi G. (eds.) Nature conservation and development. Integration impossible? Paris, GRET, Karthala. 2003;308.
 38. Balmford A, Bruner A, Cooper P, et al. Economic reasons for conserving wild nature, *Science*. 2002;297:950-953. DOI: 10.1126 / science.1073947
 39. Wilson KE, McBride MF, Bode M, Possingham HP. Prioritizing global conservation efforts. *Nature*. 2006; 440(7082):337-340.
 40. Weigel FY, Feral F, Cazalet B. Marine protected areas of West Africa. Governance and public policies. Presses University of Perpignan. 2007;232.
 41. Manuel B, Doumenge C. Between marginalization and demagoguery: What place is left for local communities in protected areas? The Cahiers d'Outre-mer [Online], 244 | 2008, Online since 01 October 2011, accessed on 01 December 2012. 2008;5476:459-488. Available:<http://com.revues.org/5476>; DOI: 10.4000/com
 42. Sournia G. Protected areas of French-speaking Africa (Central and West Africa). Yesterday Today Tomorrow. Spaces to protect or spaces to share? Ph.D. thesis, Bordeaux, University of Bordeaux III. 1996;302.
 43. Chiffaut A. Methodological guide of nature reserve management plans. MEED / ATEN, Cahier technique No. 79. 2006;72.
 44. Bioret F, Esteve R, Sturbois A. Dictionary of the protection of the nature. "Spaces and territories" collection, University Presses of Rennes. 2009;537.
 45. Borrini-Feyerabend G, Dudley N, Jaeger T, et al. Governance of protected areas: From understanding to action. Best Practice Protected Area Guidelines, Series 20, Gland, Switzerland: IUCN. 2013;xvi: 124.
 46. Hocking M, Phillips A. How well are we doing? Some thoughts on the effectiveness of protected areas. *Parks*. 1999;9(2):5-14.
 47. Benkara E. Dashboard and nature reserves. Establishment of an approach to evaluate the effectiveness of natural heritage management of the Natural Reserve of Saint-Brieuc Bay (France). Final report-version of 27. 02. 2014. Vivarmor Nature, Agency for Marine Protected Areas. 2014;135.
 48. IUCN. Framework and assessment Tools for Effectiveness of Western and Central African protected areas. West and Central Africa Program. 2012;21.
 49. IUCN. Guidelines for protected area management categories. Commission on National Parks and Protected Areas of the World Conservation Union, with the assistance of the World Conservation Monitoring Center. 1994;102.
 50. EUROSTAT. Towards environmental pressure indicators for the EU. Report (First Edition 1999: Theme 8. Environment and Energy. 1999;97.
 51. Hartley A, Nelson A, Mayaux P, et al. The assessment of African protected areas. EUR 22780. A characterization of biodiversity value, ecosystems and threats, to inform the effective allocation of conservation funding. Luxembourg EN:

- Office for Official Publications of the European Communities. 2007;80.
52. Requier-Desjardins M. Issues and ways of integrating the socio-economic dimension into environmental monitoring. CIHEAM-IAMM, France, UMR MOISA / CSFD, Mediterranean Options. 2012;14.
53. Nelson A. Travel time to major cities: A global map of Accessibility. Office for Official Publications of the European Communities, Luxembourg; 2008.
DOI: 10.2788/95835
[ISBN: 978-92-79-09771-3]

© 2019 Ntiranyibagira et al.; This is an Open Access article distributed under the terms of the Creative Commons Attribution License (<http://creativecommons.org/licenses/by/4.0>), which permits unrestricted use, distribution, and reproduction in any medium, provided the original work is properly cited.