



Structural Elucidation and Antimicrobial Analysis of Bioactive Compounds from *Amaranthus spinosus*

Anyanele, Sylvalyn Ijeoma^{a*},
Ajiwe, Vincent Ishmael Egbulefu^a,
Anyanele, Wisdom Chibuzo^b
and Umeokoli, Blessing Ogechukwu^c

^a Department of Pure and Industrial Chemistry, Nnamdi Azikiwe University, Awka, Nigeria.

^b Department of Botany, Nnamdi Azikiwe University, Awka, Nigeria.

^c Department of Pharmaceutical and Medicinal Chemistry, Nnamdi Azikiwe University, Awka, Nigeria.

Authors' contributions

This work was carried out in collaboration among all authors. All authors read and approved the final manuscript.

Article Information

DOI: 10.9734/AJACR/2023/v13i4252

Open Peer Review History:

This journal follows the Advanced Open Peer Review policy. Identity of the Reviewers, Editor(s) and additional Reviewers, peer review comments, different versions of the manuscript, comments of the editors, etc are available here: <https://www.sdiarticle5.com/review-history/99984>

Original Research Article

Received: 17/03/2023
Accepted: 18/05/2023
Published: 31/05/2023

ABSTRACT

Amaranthus spinosus is a herb which belongs to the Amaranthaceae family and used by ethnic people in the treatment of various infections and ailments. As a result of its medicinal properties, it is gaining the attention of many researchers. This research work was carried out to isolate the compounds present in the leaves of *Amaranthus spinosus*, characterize, use obtained data to validate its bioactivity.

*Corresponding author: Email: ijanyanele@gmail.com;

The crude extract was obtained using methanol in a Soxhlet extractor. The pure extracts were isolated from the crude extracts using column chromatography and further purification was done using Sephadex. The structures of the isolates were elucidated using nuclear magnetic Resonance Spectroscopy.

In the validation of the bioactivity of the plant, some pathogens were used, including *Escherichia coli*, *Bacillus species* and *Pseudomonas aeruginosa*, *Candida albicans* and *Aspergillus niger*.

The antimicrobial analysis carried out using two isolates from the plant extracts indicated the following zones of inhibition (mm) for the first isolate: 16.00 ± 0.01 , 16.00 ± 0.01 , 15.00 ± 0.08 , 16.00 ± 0.08 , 17.00 ± 0.08 . For the second isolate, the diameter zone of inhibition (mm) includes 6.00 ± 0.08 , 5.00 ± 0.10 , 26.00 ± 0.10 , 5.00 ± 0.08 , and 16.00 ± 0.10 . These results were compared with a standard antibiotic, ciprofloxacin, and standard antifungal, ketoconazole.

The minimum inhibitory concentration (MIC), minimum bactericidal concentration (MBC) and minimum fungicidal concentration (MFC) of the isolated compounds were determined and compared with those of the standard drugs.

Keywords: *Amaranthus spinosus*; antimicrobial; pathogens; nuclear magnetic resonance spectroscopy.

1. INTRODUCTION

“The plant kingdom represents a rich storehouse of organic compounds, many of which have been used for medicinal purposes and could serve as lead for the development of novel agents having good efficacy in various pathological disorders in the coming years” [1].

Plants are medicinal and are of immense value to the health of individuals. Their medicinal importance lies in their bioactive components that produce physiological activities which are definite in the human body [2] (Obazelu et al., 2021).

“The use of plant extracts and photoproducts is gaining attention due to their ability, cost-effectiveness, proven nature of specificity, biodegradability, low toxicity, and minimum residual toxicity in the ecosystem” [3]. “Medicinal plants are considered a rich resource of ingredients that can be used in drug development and synthesis [4]. They have proved their sole role in coping with several deadly diseases including cancer and the diseases associated with viral onslaught viz Hepatitis, AID etc”. [5].

“The use of herbal medicine is on the increase globally” [6,7,8].

Ethno medicine has been beneficial in the treatment of infections caused by bacterial pathogens, among its utmost benefits are its availability and ease of preparation, hence serving the ever-growing population of underdeveloped nations [9].

“The use of various parts of plants in the prevention and treatment of many ailments is now experiencing positive awareness, especially amongst rural dwellers because of their availability, cheaper prices, effectiveness, and resistance to disease-causing organisms” [10].

“As at present a substantial number of drugs are developed from plants that are active against a number of ailments and diseases conditions such as hypertension, pains, fever, cancer, diabetes, arthritis, gastrointestinal diseases and so on” [11,12].

Amaranthus spinosus has a long history usage in traditional medicine against various ailments in the world [13]. It is also used as green vegetables and cultivated in all over India [14,15].

“The juice of *Amaranthus spinosus* is used by the tribe of Kerala, India to prevent swelling around stomach while the leaves are boiled without salt and consumed for 2-3 days to cure jaundice. It is also used as anti-inflammatory, antimalaria, antibacterial, antimicrobial, antidiuretic, antiviral, and hepatic disorders” [16].

“The whole plant is used for the treatment of snake-bite, and thus acts as an antidote to snake venom. The root paste in an equal volume of honey is used to control vomiting” [17].

“The plant is used in the treatment of abdominal pain, chicken pox, dysentery, dysuria, fever, hysteria, malaria, mania, tonsillitis, and vomiting” [18,19].

“With the emerging world interest in adopting and studying traditional systems and exploiting their potential based on different health care systems, like evaluation of the rich heritage of traditional medicine is essential” [20]. Hence, this work aimed at providing valid data which will prove the ethnomedicinal efficacy of *Amaranthus spinosus* and also add to the existing knowledge created by some researchers on the plant.

2. MATERIALS AND METHODS

Collection of plant materials: *Amaranthus spinosus* plants were uprooted from uncultivated farmland in Awo-Omamma, Oru East Local Government Area, in Imo-state. The leaves were detached from the plants, washed, and air dried for 7 days under room temperature to avoid loss of active compounds.

The dried leaves were crushed into powder using a manual grinder. The powdered sample was then stored in an airtight container for further use.

Extraction of plant materials: 200ml of methanol was taken into a 500ml round bottom flask. 500g of the powdered sample was placed in the Soxhlet extractor. The round bottom flask was attached to the extractor and the extraction lasted for about 3 hours. The extract was collected and concentrated at a low temperature of about 40°C. The extract was cooled and stored in sample bottles for subsequent analysis.

Isolation of compounds using column chromatography: Column chromatography is a simple and most popular separation and purification technique. It consists of a stationary solid phase that adsorbs and separates the compounds passing through it with the help of a liquid mobile phase [21].

A column was prepared using silica gel (60-120 mesh) and a solvent mixture of n-hexane and ethyl acetate in a ratio 90:10. The silica gel (adsorbent) was added as a fine dry powder in the column and the solvent mixture was allowed to flow freely through the column until equilibrium was achieved (Neha, 2021).

The extract was dissolved in a little quantity of the solvent mixture and was transferred to the top of the column which was covered with a small cotton wool to serve as a filter. Then the eluting solvent was added and the tap was opened to allow the eluting solvent to carry the extract through for proper isolation.

The eluent was collected using 50ml conical flasks. Isocratic elution technique was used hence further elution was done using the same solvent mixture. After the elution, the different isolated samples were further separated using Sephadex.

Further purification using sephadex: 25g of the Sephadex was dissolved in 150 ml of dichloromethane (Dcm) and methanol (50:50). The mixture was allowed to settle. The tap was opened to allow the solvent mixture to move down gradually until the level of the solvent mixture corresponds to that of the slurry. Each of the impure fractions from the column was dissolved in a small quantity of the solvent mixture (Dcm: methanol) and the mixture was introduced into a glass tube containing the Sephadex slurry. The sample was eluted using the solvent mixture. The eluent (1cm³) was collected in intervals using test tubes. The test tubes and the contents were kept at room temperature for drying for about 2-3 days.

Thin layer chromatography of the isolates: Each of the content of the test tubes was reconstituted using a mixture of Dcm: methanol (9:1). Aluminium foil TLC plates were given horizontal lines 1cm from the edge using a pencil. Marks and numbers were given on the horizontal lines depending on the number of fractions. The spotting was done using a micro pipette. The TLC plates were developed in the solvent mixture of Dcm: methanol (9:1). After the development, the plates were viewed in a UV light. Similar fractions were pooled together and stored in weighed sample bottles with labels ASLE₁ and ASLE₂. After five days, the crystals were weighed and kept for further analysis.

Structural elucidation of the isolated compounds using NMR: 10mg of each of the isolates was dissolved in acetone and was analyzed for ¹H, ¹³C, DEPT, COSY, HMBC, and HSQC in an NMR spectrometer (Varian-Vnmrs400) model.

Antimicrobial Analysis of the isolated compounds: Stock cultures of selected bacteria species and fungal cultures were obtained from the department of Pharmaceutical Microbiology and Biotechnology, Faculty of Pharmacy, Nnamdi Azikiwe University, Agulu. The test organisms were prepared for the test.

Determination of the diameter of the zone of inhibition using the agar well diffusion method: The agar well diffusion method is widely used to evaluate the antimicrobial activity of plants or microbial extracts [22,23]. The agar well diffusion method used was described by Mounyr et al. [24].

The agar plate surfaces were inoculated by spreading 1ml each of the freshly prepared microbial inoculum over the entire agar surface. Then, 6 holes each with a diameter of 6mm were aseptically made on each plate. These were sufficiently spaced to prevent any inhibition zone from overlapping later on.

100µl of each extract (isolated compounds) and a control drug equivalent to a pre-determined concentration of 128% (w/v) were introduced into each well. The plates were kept for 30 minutes on the bench for the diffusion of the extracts to take place before incubation. The plates were incubated for 24 hours at 37°C. Later, zones of inhibition were inspected, measured, and recorded.

Determination of minimum inhibition concentration (MIC) and minimum bactericidal concentration (MBC): Serial doubling dilutions of each extract were made, that is $\frac{1}{2}$, $\frac{1}{4}$, $\frac{1}{8}$, $\frac{1}{16}$, $\frac{1}{32}$, $\frac{1}{64}$ and $\frac{1}{128}$ by adding 2ml of each compound into the first bottle of 2ml of double-strength glucose indicator broth. From here, in a like manner, other dilutions in single-strength broth were made down to $\frac{1}{128}$ dilution. Tube 8 contained only media and culture, which can support growth of the organism. Tube 9 contained broth and extract to check the sterility of broth without organism inoculation. Tube 10 contained $\frac{1}{2}$ strength solvent cum broth to assess any deleterious effect of solvents on the microorganisms at lower dilutions.

Using a 3.0ml dropper sterile pipette, one drop of the appropriate inoculum, that is, the test organism was added respectively into each of the dilutions above. They were gently mixed and incubated at 37°C for 48 hours.

To obtain the minimum inhibitory concentration (MIC) of the compounds, all those tubes showing no growth were tightly sub-cultured on fresh nutrient broth with a wire loop and incubated overnight at 37°C. The broth was used for the

sub-culture in order to dilute out any carryover of residual extract.

Fresh nutrient agar was also used for the sub-culture to make sure there were no contaminating organisms.

The last tube showing growth was the minimum inhibitory concentration (MIC) of the compounds. Also, the minimum bacterial concentration (MBC) was in the last dilution tube showing no change in the broth.

Similarly, the above test was repeated using a standard antibiotic, Ciprofloxacin.

Determination of the Minimum Inhibitory Concentration (MIC) and Minimum Fungicidal concentration (MFC): Seven McCartney bottles for each compound each containing 2ml $\frac{1}{2}$ strength solvent to correspond with the two fungal test organisms. The bottles were labelled 1-7 according to match with the compounds and fungal cultures. The dilutions were also made as described above. The test was performed using punched agar diffusion method by Bryant [25].

The sabouraud dextrose agar plates were prepared, punched and inoculated as described above. The labelled wells were carefully filled with 2 drops of the different compound dilutions. From the wells, the compound dilutions diffused into the surrounding media and acted on the test organisms. The plates were kept for 30 minutes on the bench for proper diffusion. Thereafter, the plates were lifted very gently and placed with the base downwards in the incubator at 28°C- 30°C for 48 hours. The plates were then examined for zones of inhibition. The control tubes 8,9 and 10 were first examined to ascertain that they behaved well and any abnormality was noted.

To obtain the minimum inhibitory concentration (MIC) of the compounds, all those tubes showing no growth were lightly sub-cultured on fresh sabouraud dextrose agar and incubated at 28°C- 30°C for 48 hours. The last tube showing growth was the minimum inhibitory concentration (MIC) of the compound. Also, the minimum fungicidal concentration (MFC) is the last dilution tube showing no change in the broth. Similarly, the above test was done using a standard antifungal agent, Ketoconazole.

3. RESULTS AND DISCUSSION

The Result of the NMR Analysis of the Isolated Compounds: The NMR analysis was carried out on the two compounds isolated from *Amaranthus spinosus* leaf extracts in the elucidation of their structures

ASLE₁: ¹³C NMR (400 MHz, acetone) δ 131.10 (d, *J* = 5.4 Hz), 128.72 (s), 64.99 (s), 37.12 (s), 33.34 (s), 31.78 (d, *J* = 5.7 Hz), 30.35 (d, *J* = 16.7 Hz), 29.81 – 28.30 (m), 25.21 (s), 24.74 (d, *J* = 6.9 Hz), 23.59 (s), 22.78 (d, *J* = 3.8 Hz), 22.44 (s), 20.96 (s), 20.59 (s), 18.96 (s), 18.49 (s), 13.50 (s), 13.13 (s), 11.65 (d, *J* = 19.0 Hz).

¹H NMR (400 MHz, acetone) δ 7.86 – 7.48 (m, 5H), 6.04 (dd, *J* = 34.1, 15.4 Hz, 1H), 5.20 (dd, *J* = 15.3, 8.8 Hz, 1H), 5.07 (dd, *J* = 15.1, 8.7 Hz, 1H), 4.49 – 4.35 (m, 1H), 4.35 – 4.14 (m, 5H), 4.07 (dd, *J* = 17.0, 10.0 Hz, 1H), 3.60 (s, 1H), 3.50 (dd, *J* = 13.0, 8.4 Hz, 1H), 3.33 – 3.22 (m, 1H), 3.06 – 2.96 (m, 1H), 2.84 (d, *J* = 18.2 Hz, 1H), 2.31 – 2.22 (m, 3H), 2.14 – 2.02 (m, 2H),

1.92 (d, *J* = 28.7 Hz, 2H), 1.85 (dd, *J* = 45.7, 29.7 Hz, 4H), 2.00 – 1.60 (m, 12H), 2.00 – 1.55 (m, 15H), 2.00 – -0.55 (m, 73H), 0.51 (d, *J* = 62.8 Hz, 4H), 0.51 (d, *J* = 62.8 Hz, 8H), 0.40 – 0.10 (m, 2H).

ASLE₂: ¹³C NMR (400 MHz, acetone) δ), 132.52 (d, *J* = 3.7 Hz), 131.09 (d, *J* = 5.5 Hz), 128.72 (d, *J* = 1.5 Hz), 67.39 (s), 64.97 (s), 38.74 (s), 30.34 (d, *J* = 16.8 Hz), 29.63 – 28.27 (m), 23.59 (s), 22.75 (s), 18.95 (s), 13.44 (s), 13.10 (s), 10.42 (s).

¹H NMR (400 MHz, acetone) δ 7.74 (dq, *J* = 7.4, 3.7 Hz, 19H), 7.70 – 7.56 (m, 22H), 6.08 (dd, *J* = 21.3, 7.8 Hz, 3H), 5.62 (ddd, *J* = 28.3, 12.6, 7.9 Hz, 8H), 5.29 – 5.15 (m, 6H), 5.08 (dd, *J* = 15.4, 8.6 Hz, 4H), 4.59 (d, *J* = 17.8 Hz, 3H), 4.49 – 4.35 (m, 5H), 4.32 – 4.14 (m, 44H), 4.04 (ddd, *J* = 15.4, 11.8, 5.8 Hz, 6H), 3.71 – 3.49 (m, 10H), 3.48 – 3.37 (m, 4H), 3.35 – 3.20 (m, 6H), 3.19 – 3.08 (m, 4H), 2.97 – 2.66 (m, 29H), 2.66 – 2.11 (m, 29H), 2.11 – 1.62 (m, 78H), 1.61 – 0.66 (m, 305H).

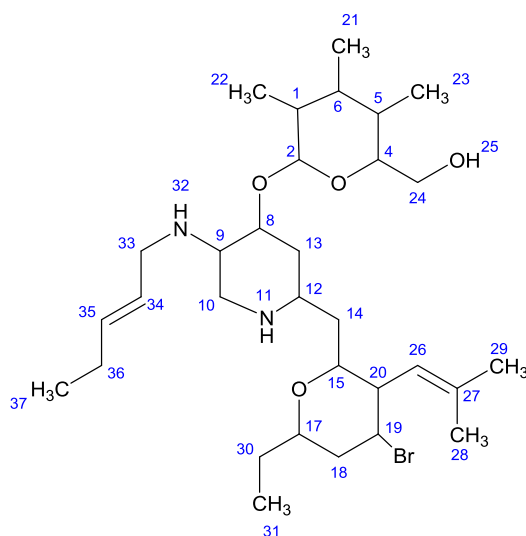


Fig. 1. Structure of ASLE1

Molecular Formula of ASLE₁: C₃₁H₅₅BrN₂O₄; Molecular weight of ASLE₁: 599.6834

IUPAC name: (E)-(6-((2-((4-bromo-6-ethyl-3-(2-methylprop-1-en-1-yl) tetrahydro-2H-pyran-2-yl) methyl)-5-(pent-2-en-1-ylamino)piperidin-4-yl)oxy)-3,4,5-trimethyltetrahydro-2H-pyran-2-yl)methanol

Table 1. Antimicrobial activities of ASLE₁, ASLE₂, ciprofloxacin and ketoconazole

Extract code	<i>Bacillus species</i>	<i>Escherichia coli</i>	<i>Pseudomonas aeruginosa</i>	<i>Candida albicans</i>	<i>Aspergillus niger</i>
ASLE ₁	16.00±0.01	16.00±0.01	15.00±0.08	16.00±0.08	17.00±0.08
ASLE ₂	6.00±0.08	5.00±0.10	26.00±0.10	5.00 ±0.08	16.00±0.10
Ciprofloxacin	16.10±0.08	15.33±0.10	16.67±0.12	--	--
Ketoconazole	--	--	--	16.00±0.01	8.00±0.01

Key -- = no result

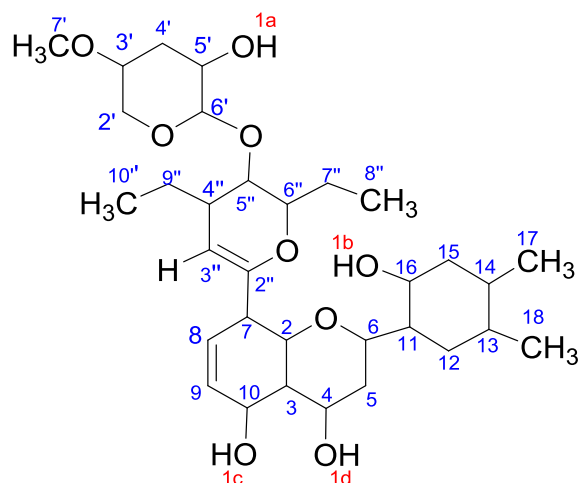


Fig. 2. The structure of ASLE₂

Molecular formula of ASLE₂, C₃₂H₅₂O₉; Molecular weight of ASLE₂, 580.74988

IUPAC name: 8-(2,4-diethyl-5-hydroxy-3-((3-hydroxy-5-methoxytetrahydro-2H-pyran-2-yl)oxy))-3,4-dihydro-2H-pyran-6-yl)-2-(2-hydroxy-4,5-dimethylcyclohexyl)-3,4,4a,5,8,8a-hexahydro-2H-chromene-4,5-diol

Results of the antimicrobial activities: The antimicrobial screening results obtained from the Agar well diffusion method for *Amaranthus spinosus* methanolic extract showed a marked inhibitory effect against some of the test organisms.

For ASLE₁, the average diameter (mm) of the zone of inhibition was for Bacillus species (16.00 ± 0.01), *E. coli* (16.00 ± 0.01), *P. aeruginosa* (15.00 ± 0.08), *C. albicans* (16.00 ± 0.08) and *A. niger* (17.00 ± 0.08).

Similarly, for ASLE₂, the average diameter (mm) of the zone of inhibition for Bacillus species (6.00 ± 0.08), *E. coli* (5.00 ± 0.10), *P. aeruginosa* (26.00 ± 0.10), *C. albicans* (5.00 ± 0.08) and *A. niger* (16.00 ± 0.10).

The results above showed that the extract ASLE₁ has high activity on the test organisms (bacteria and fungi). It was observed that the extract was more active than the standard antibiotic, ciprofloxacin on *E. coli* and also more active than the antifungal agent, ketoconazole on *A. niger*. These results suggest that the extract will be very effective in the treatment of infections and diseases caused by these organisms. It can be employed in the manufacture of drugs caused by *Escherichia coli*, the commonest pathogen associated with patients with cystitis wounds, meningitis, diarrhea diseases like dysentery [26]. Rabiou et al. [27] reported the antimicrobial activity of *Amaranthus spinosus*. From the table, the activity of the extract on Bacillus species, *P.*

aeruginosa, and *C. albicans* were almost the same as those of the standard drugs.

Similarly, the extract, ASLE₂ showed very high activity on *P. aeruginosa* and *A. niger* which are higher than those of the standard drugs on these organisms while the standard drugs showed higher activity on *B. species*, *E. coli*, and *C. albicans* than the extract. *Pseudomonas aeruginosa* is an opportunistic pathogen affecting immunocompromised pathogens. It is known as the leading cause of morbidity and mortality in cystic fibrosis (CF) patients and as one of the leading causes of nosocomial infections [28]. These results showed that the leaf extract of *Amaranthus spinosus* can be used as both antibacterial and antifungal agent. Rai et al. [16] have reported its use as an anti-inflammatory, antimalarial, antibacterial, antimicrobial, antidiuretic, anti-viral and hepatic disorder.

The MIC is the lowest concentration of antimicrobial agent that completely inhibits growth of the organism in tubes or microdilution wells as detected by the unaided eye [29].

From the table, ASLE₁ gave the MIC's of 0.250, 0.250, 0.250, 0.125 and 0.625mg/ml towards Bacillus species, *E. coli*, *P. aeruginosa*, *C. albicans* and *A. niger* respectively.

Similarly, ASLE₂ gave the MIC's of 0.50, 0.50, 0.625, 1.00 and 0.625 mg/ml toward Bacillus species, *E. coli*, *P. aeruginosa*, *c. albicans* and *A. niger* respectively.

Table 2. Results of the MIC, MBC and MFC of ASLE₁, ASLE₂, Ciprofloxacin and Ketoconazole

Extract code	Activity	<i>Bacillus species</i>	<i>Escherichia coli</i>	<i>Pseudomonas aeruginosa</i>	<i>Candida albicans</i>	<i>Aspergillus niger</i>
ASLE ₁	MIC	0.250	0.250	0.250	0.125	0.625
	MBC	0.50	0.50	0.50	--	--
	MFC	--	--	--	0.250	0.125
ASLE ₂	MIC	0.50	0.50	0.625	1.00	0.625
	MBC	1.00	1.00	0.125	--	--
	MFC	--	--	--	0.50	0.125
C. Floxacin	MIC	0.250	0.250	0.250	--	--
	MBC	0.50	0.50	0.50	--	--
Ketoconazole	MIC	--	--	--	0.125	0.125
	MFC	--	--	--	0.250	0.250

These extracts from *Amaranthus spinosus* had appreciable MICs compared with ciprofloxacin and ketoconazole.

MBC is defined as the lowest concentration of antibacterial agent that will prevent the growth of bacterium after the subculture on an antibacterial-free medium [9].

MFC is defined as the lowest concentration of the antifungal agent that resulting in the death of 99.9% of the inoculum.

The MBC and MFC results of ASLE₁ showed that *Bacillus species*, *E. coli*, *P. aeruginosa*, *C. albicans* and *A. niger* were completely destroyed at the concentrations of 0.50, 0.50, 0.50, 0.250 and 0.125mg/ml respectively.

Similarly, the MBC and MFC results of ASLE₂ for *Bacillus species*, *E. coli*, *P. aeruginosa*, *C. albicans* and *A. Niger* were completely destroyed at the 1.00, 1.00, 0.125, 0.50 and 0.125mg/ml respectively.

These MBC and MFC results were comparable to those of the ciproflaxocin and ketoconazole respectively.

Ciprofloxacin completely exterminated *Bacillus species*, *E. coli* and *P. aeruginosa* at concentrations of 0.50mg/ml while Ketoconazole completely destroyed *C. albicans* and *A. niger* at 0.250mg/ml.

Based on the MIC, MBC and MFC, the extracts showed toxicity to all the test organisms at low concentrations indicating that the extracts at low concentrations are both antibacterial and antifungal agents. These findings also suggest that these two extracts could serve as drug in the pharmaceutical industries.

4. CONCLUSION

Amaranthus spinosus is no doubt a medicinal plant. The methanolic leaf extracts have both antibacterial and antifungal properties. Antimicrobial (antibacterial and antifungal) analyses showed that the extracts had broad spectrum antimicrobial properties and were comparable to antimicrobial agents (ciprofloxacin and ketoconazole) used in the assay. The extracts can be used in the treatment of infections caused by *Pseudomonas aeruginosa* and *Aspergillus niger*. This is in support of the claim of the ethnic people in the medicinal use of the plants. These findings revealed that the potency of the extracts against the pathogens used could be as a result of the presence of naturally occurring bioactive phytochemicals present in the plant.

COMPETING INTERESTS

Authors have declared that no competing interests exist.

REFERENCES

1. Dike IP, Obembe OO, Adebisi FE. Ethnobotanical survey for potential antimalarial plants in South-Western Nigeria. *J Ethnopharmacol.* 2012;144(3): 618-26. DOI: 10.1016/j.jep.2012.10.002, PMID 23085021.
2. Edeoga HO, Okwu DE, Mbaebie BO. Phytochemical constituents of some Nigerian Medicinal Plants. *Afr J Biotechnol.* 2005;4(7):658-88.
3. Maji D, Roy RU, Das S. Prevention of Type 2 diabetes in the prediabetic population. *J Indian Med Assoc.* 2005;103(11):609-11.

4. Yudharaj P, Shankar M, Sowjanya R, Streesha B, Ashoknalk E, Jasmine R, et al. Importance and Uses of Medicinal- An overview. *Int J Preclin Pharm Res.* 2010;7(2):67-73.
5. Dar RA, Shahnawaz M, Qazi PH. General overview of medicinal plants: A review. *J Phytopharmacol.* 2017;6(6):349-51. DOI: 10.31254/phyto.2017.6608
6. Asimwe S, Namutebi A, Borg-Karissan A, Kamatenesi-Mugisha M, Oryem-Origa H. Documentation and Consensus of Indigenous Knowledge on Medicinal plants used by the Local Communities in Western Uganda. *J Nat Prod Plant Resour.* 2014; 4(1):34-42.
7. Joshi AR, Joshi K. Indigenous knowledge and uses medicinal plants by local communities of the kali Gandaki watershed Area, Nepal. *J Ethnopharmacol.* 2000; 73:119-29.
8. Kamatenesi-Mugisha M, Oryem-Origa H. Traditional herbal remedies used in the management of sexual importance and erectile dysfunction in western Uganda. *Afr Health Sci.* 2005;5(1):40-9.
9. Ijoma KI, Ajiwe VIE. *Jathropha tanjorensis*, a flora of SouthEast Nigeria: Isolation and Characterization of naringenin and Validation of Bio-enhanced synergistical Activity of α -Tocopherol Towards clinical Isolation of Resistant Bacterial. *Makara J Sci.* 2022; 26(2):120-7.
10. Arowosegbe S, Olanipekun MK, Olowoyeye OJ. Influence of Location on the phytochemical, Nutritional and Mineral Composition of the leaves of *Moringa oleifera* (LAM) Grown in Ekiti State. *Bull Pure Appl Scie. Botany.* 2020;39b (1): 40-5. DOI: 10.5958/2320-3196.2020.00007.5
11. Olanipekun MK, Akirun K, Amoo JA. Phytochemical screening and proximate analysis of some Medicinal plants used in Irun Akoko, Akoko North West Local Government Area Ondo State, Nigeria. *Europa J Bot Plant Sci Phytol.* 2021;6(1):1-13.
12. Patel PN, Suthar M, Shah TG, Patiel LJ. Anticancer activity of *Nigella sativa* seeds against HL-60. 2010;U-937 and HEK-293T cell line. *Pharm Expt.*
13. Barku VYA, Opoku-Boahen Y, Owusu Ansah E, Mensah EF. Antioxidant activity and the estimation of total phenolic and flavonoid contents of the root extracts of *Amaranthus spinosus*. *Asian Journal of Plant Science Resources.* 2013;3(1): 69-74.
14. Chaudhary MA, Imran I, Bashir S, Mehmood MH, Rehman NU, Gilani AH. Evaluation of gut modulatory and bronchodilator activities of *Amaranthus spinosus* Linn. *BMC Complement Altern Med.* 2012; 12:166. DOI: 10.1186/1472-6882-12-166, PMID 23025418.
15. Jhade D, Ahirwar D, Sharma NK, Jain R, Gupta S. A pharmacological reviews: *Amaranthus spinosus*. *Research J. of research in pharmacognosy and phytochemistry.* 2009;1(3):169-72.
16. Rai PK, Jindal S, Gupta N, Rana R. An inside Review of *Amaranthus spinosus*: A potential Medicinal Plant of India. *Int J Res Pharm Chem.* 2014;4(3):643-53.
17. Kirtikar KR, Basu BD. *Indian medicinal plants.* New Connaught Place, Dehradun: Oriental Enterprises, Uttranehal. India. 2001;2nd ed(1):2832-6.
18. Ishrat JB, Laizuman N, Farhana AR, Obaydul H. Antibacterial, cytotoxic, and antioxidant activity of chloroform, n-hexane and ethyl acetate extract of Plant *Amaranthus spinosus*. *Int J Pharm Technol Research.* 2011;3(3):1675-80.
19. Hussain Z, Amresh G, Singh S, Rao CV. Antidiarrhoea and antiulcer activity of *Amaranthus spinosus* in experimental animals. *Pharm Biol.* 2009; 47(10):932-9. DOI: 10.1080/13880200902950769
20. Srivastava A, Singh K, Gul T, Ahirwar V. Alterations in hematocellular components of albino rats due to methanolic extract of *Amaranthus spinosus*. *Pharm Globule.* 2011;3(6):1-8.
21. Srivastava N, Singh A, Kumari P, Nishad JH, Gautam VS, Yadav M, et al. Advances in extraction technologies: Isolation and purification of bioactive compounds. Amsterdam: Elsevier. The Netherland. 2021;409-33.
22. Magaldi S, Mata-Essayag S, Hartung de capriles C, Perez C, Colella MT, Olaizola C, et al. Well diffusion for antifungal susceptibility testing. *Int J Infect Dis.* 2004;8(1):39-45. DOI: 10.1016/j.ijid.2003.03.002, PMID 14690779.
23. Valgas C, De Souza SM, Smaia EFA. Screening metals to determine antibacterial activity of natural products. *Braz J Microb.* 2007; 38:369-80.
24. Balouiri M, Sadiki M, Ibsouda SK. Methods for *In vitro* evaluating

- antimicrobial activity: A review. J Pharm Anal. 2016;6(2):71-9.
DOI: 10.1016/j.jpha.2015.11.005
25. Bryant MC. Antibiotics and their biological control. 2nd ed. Butterworth. London. 1972;85.
 26. Cheesbrough M. District laboratory practice in Tropical countries. Cambridge University Press. 2002;40-5.
 27. Rabiun N, Haruna S, Ahmed Ahmed A, Ridwan N, Hassans A, Abdulraheem TA, et al. Phytochemical analysis and antimicrobial activity of leaf extract of *Amaranthus spinosus*. Commun Phys Sci. 2020;5(1):42-5.
 28. Moradali MF, Ghods S, Rehm BH. *Pseudomonas aeruginosa* lifestyle: A paradigm for Adaptation, survival and Persistence. Front Cell Infect Microbiol. 2017; 7:39.
DOI: 10.3389/fcimb.2017.00039
PMID 28261568.
 29. CLSI. Methods for dilution antimicrobial susceptibility Test for bacteria that grow aerobically. Approved standard. 9th ed, CLSI document M07-A9. 950 West Valley Road: Clinical and Laboratory standards Institute, Suite 2500, Wayne, Pennsylvania 19087. USA; 2012.

© 2023 Ijeoma et al.; This is an Open Access article distributed under the terms of the Creative Commons Attribution License (<http://creativecommons.org/licenses/by/4.0>), which permits unrestricted use, distribution, and reproduction in any medium, provided the original work is properly cited.

Peer-review history:

The peer review history for this paper can be accessed here:
<https://www.sdiarticle5.com/review-history/99984>